

Residential Landscape Design Pattern Book

Planting Plans and Plant Schedules



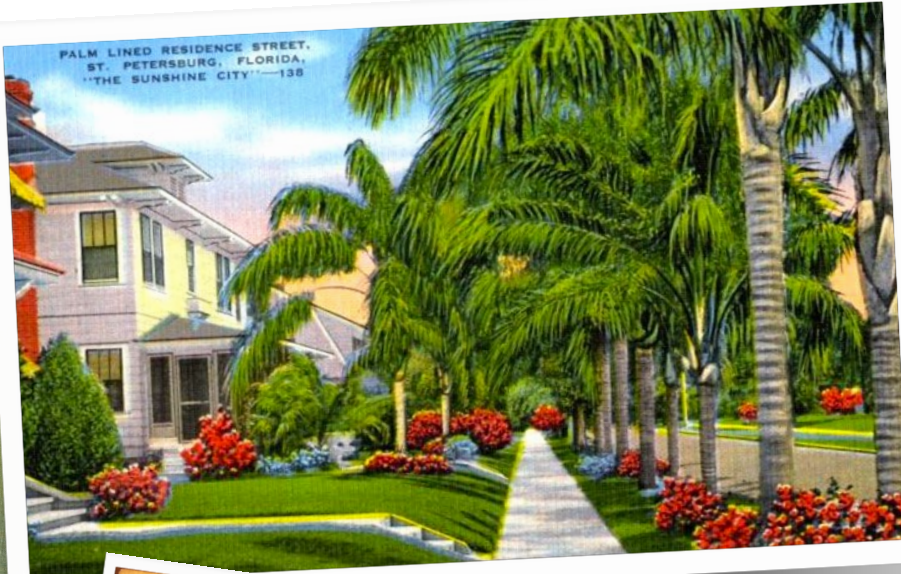
Contents

Example Planting Plans and Plant Schedules for typical lot layouts in residential neighborhoods

How to use this pattern book	2-3
Plan 1—Front yard with driveway	4-5
Plan 2—Front yard with side entry garage	6-7
Plan 3—Front yard with entry walk from driveway	8-9
Plan 4—Back yard with alley driveway	10-11
Plan 5—Back yard with patio	12-13
Plan 6—Back yard open pool with deck	14-15
Plan 7—Back yard with screened pool	16-17
Plan 8—Back yard with pond shoreline	18-19
Plan 9—Back yard with dog run	20-21
Plan 10—Back yard and side yard patio	22-23
Plan 11—Side and front yard (corner lot)	24-25
Plan 12—Butterfly garden and rain garden plans	26-27
Plan 13—Utilities and screened pool plans	28-29

Authors

Gail Hansen, MLA, PhD
UF/IFAS Department of Environmental Horticulture
CLUE- Center for Land Use Efficiency
Larry Teague, MLA, RLA
Mia Requesens, MLA
Max Gooding, BLA



A Guide for the Design of Sustainable Landscapes for the Tampa Bay Region

Pattern Book Content

This guide has 13 different typical lot layouts that can be found in many neighborhood developments in Florida. The concept of a pattern book is to present different landscape layouts with suggested plants, including trees, shrubs and groundcover. The pattern book is for use by developers, builders, landscape architects, garden designers, and homeowners as a basic “pattern” that can be adapted to fit specific site conditions and dimensions. The lot sizes in this guide average about 1/4 acre with house footprints of about 2,000 to 2,500 sq. ft., which is average for most urban neighborhoods and housing developments in Florida. Plant selection for each plan is based on USDA Hardiness zones 9A-9B and 10A-10B for the coastal and inland areas of the Tampa Bay region.

Cost Options

Each plan has three options for low, medium and high cost based on the number of plants used in the plan.

Option 1—Lowest cost (Bed A on plan) has the least amount of plants, with basic foundation plants and turf.

Option 2—Medium cost, (Beds A & B on plan) extends the foundation plant beds, and adds additional plant beds with less turf.

Option 3—Highest cost (Beds A, B & C on plan) is a fully designed yard with plants in front and side yards and in the verge. Although Option 3 is the highest cost option, it is designed for a reasonable budget for the lot size. Examples below are the plant counts for each cost level for the front yard plan shown on the right.

Option 1 — BED A only- Lowest Cost

Entry path and foundation plants

Plant ID Number and total plants

Trees- 1, 2 and 4 (5 trees)

Shrubs- 5-7, 9, 10, 13, 18 (54 plants)

Groundcover- 14 (563 sq. ft.)

Option 2 — BED A & B - Medium Cost

Entry path, foundation plants and corner planted islands

Plant ID Number and total plants

Trees- 1-4 (6 trees)

Shrubs- 5-7, 9, 10, 12, 13, 18 (71 plants)

Groundcover- 14, 19 (803 sq. ft.)
Remainder of front yard in turf

Option 3 — BED A, B & C- Highest Cost

Entry path, foundation plants, islands, verge, and property boundary plants

Plant ID Number and total plants

Trees- 1-4 (6)

Shrubs- 5-13, 18 (78 plants)

Groundcover- 14-16, 19 (1,373 sq. ft.)

Turf: 1,502 sq. ft.

Site Dimensions

Overall Site: 10,018 sq. ft. (.23 acres)

Front Yard without driveway: 3,486 sq. ft.

Front Yard: Depth-34-40 ft., Width-113 ft.

Side Yards: Width- 10 ft. and 36 ft.

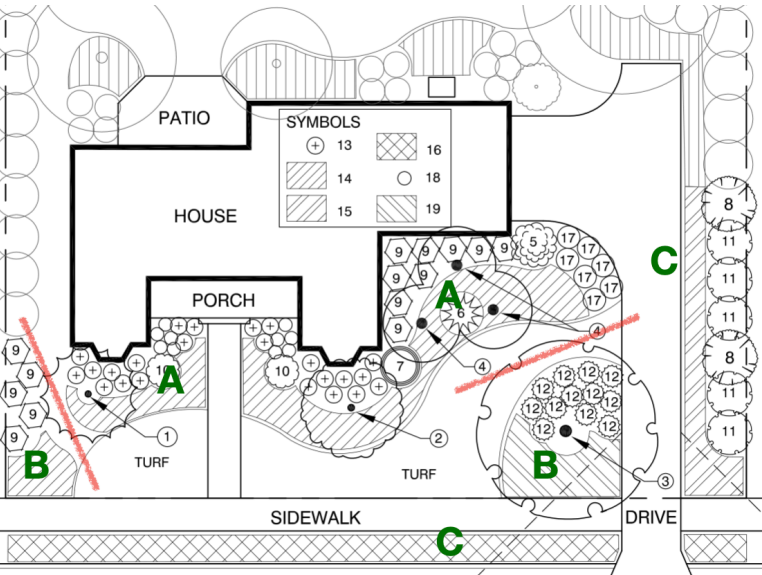
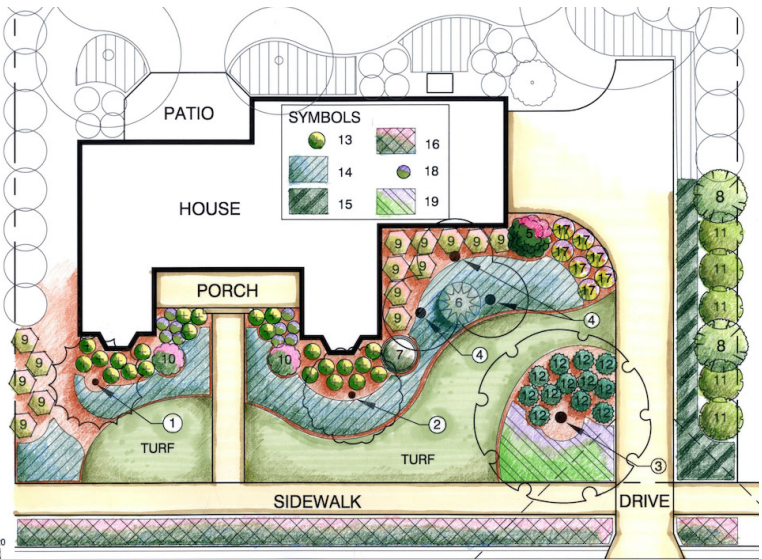
Tree canopy coverage: 1,084 sq. ft.

Driveway: 1,144 sq. ft.

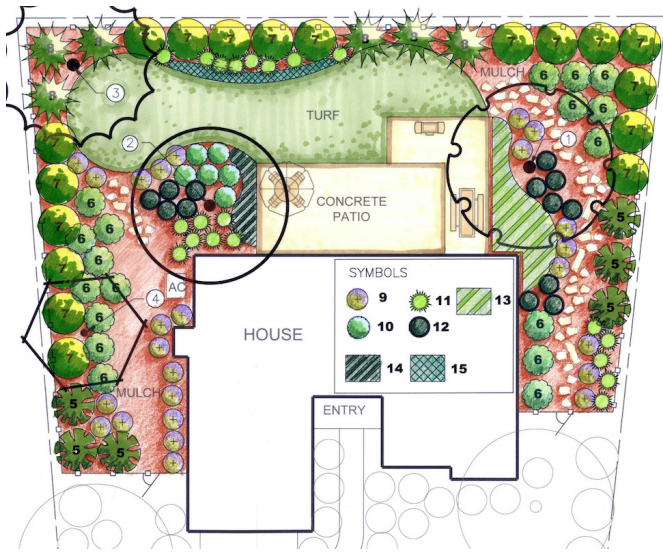
House: 1,735 sq. ft.

Landscape Plans

Three of the plans are for typical front yard layouts with one front entry garage design and two side entry garage designs. Each design has a different configuration for the walkway to the front door. Six plans show different layouts for the back yard, including a back alley driveway, patios, pools, a dog run, and a stormwater pond shoreline. Two plans are for side yards, one with a courtyard patio and the other on a corner lot where the side yard is visible from the street. One plan has suggestions for a backyard butterfly garden and a front yard rain garden, and the final plan shows how to use plants around utilities and screened pools.



Front yard plan with side entry garage



Back yard plan with patio

Plant Identifier Numbers on Plan and Schedule

Each plant has an identifier number on the plan which is also in Column 1 on the plant schedules. For example, a plant with the number 4 (Fringetree on the schedule below) is listed with three possible species to choose from, two for sun conditions and one for shade. Botanical and common names are listed for each plant. The three species listed were selected to be similar in size (height and width), and similar in texture, form, and color so any plant selected from the three choices will maintain the aesthetic integrity of the design. Plants were also selected for functional attributes, such as providing shade or a buffer, and best fit based on the location on the plan, such as a foundation plant, a walkway plant, or a plant for the water's edge.

PLANT SCHEDULE FOR PLANTING PLAN #5: BACKYARD WITH PATIO - ZONES 9A - 9B				
NO.	SUN PLANTS (plus one alternative)		SHADE PLANTS	
	BOTANICAL	COMMON NAME	BOTANICAL	COMMON NAME
TREES				
1	Gordonia lasianthus	Loblolly Bay	Myrica cerifera	Wax Myrtle
2	Betula nigra	River Birch	Cercis canadensis	Eastern Redbud
3	Persea palustris	Swamp Bay	Asimina spp.	Pawpaw
4	Crataegus spp.	Hawthorn	Ilex decidua	Possum Haw
5	Prunus umbellata	Flatwoods Plum		
6	Butia capitata	Pindo Palm		
7	Chionanthus virginicus	Fringetree		
8	Cercis canadensis	Eastern Redbud		
SHRUBS				
9	Zamia furfuracea	Cardboard Plant	Mahonia fortunei	Holly Grape
10	Crinum spp.	Crinum Lily		
11	Zamia floridana	Coontie	Neomarica gracilis	Walking Iris
12	Liriope muscari	Liriope		

A Guide for the Design of Sustainable Landscapes for the Tampa Bay Region

How to use this pattern book

1. **Select a front yard plan and a back yard plan** that most closely matches the hardscape layout and house footprint of your lot.
2. **Review the Site Dimensions** to determine if the plan is similar in size and layout. If your lot is larger, but the layout is reasonably similar, you can use a multiplier to determine the number of additional plants that you will need.
3. **Select Option 1, 2, or 3**, depending on your budget and the desired finished landscape. For example, if the budget only allows for minimal plant material, use Option 1, which is Bed A only. Homeowners can be given a choice of the options depending on the landscape budget. Option 1 is the basic plan, but they can be given the opportunity to select Option 2 or the full build-out with Option 3 for an additional fee.
4. **Review the plant schedule** and select the appropriate plant based on sun or shade conditions. The sun condition has two possible species to choose from. The recommendation is to use the first species listed, as the second option is intended to be a substitute if needed. However, if a particular plant is preferred for aesthetic reasons or for availability, select the preferred plant.

To create an adapted plan

5. **Use the plan as a “pattern”** that can be adapted to fit the site. For example, the hardscape, such as walkways and driveways, may be in a slightly different location or a different size. The original plans were drawn at 20 scale (1” = 20’), they have been slightly enlarged in the pattern book to show detail.
6. **Create a final plant list with the plants you have selected** and draw them on your adapted plan. Use the same size symbol or circle to represent the plant. The symbols have been drawn to 20 scale on the plan to show their mature (fully grown) spread (width) to indicate the spacing needed to give the small, newly installed plants room to grow.
7. **Label the plants and create a new plant list** with the plant count for each plant. The new plant list shows the name and number of each plant to be purchased.

Florida Water Star Residential Criteria- Silver Certification

Always check the Florida Water Star website at FloridaWaterStar.com for the latest requirements and revisions.

The plans have been designed to meet landscape criteria for the Florida Water Star Silver Certification for residential landscapes. The landscape criteria, LC 1 through LC 7 are listed below.

LC 1: No invasive exotic plant species are in the landscaped area. The plants were selected from the *Florida-Friendly Landscaping Guide to Plant Selection & Landscape Design*. No known invasive plants were used in the plans at the time the book was written, however, the UF/IFAS assessment invasive plant list is regularly up-dated and should be consulted.

LC 2: Root balls are at least 2.5 feet on center from the foundation of the structure. The foundation plants on the plans are shown at their mature size and are spaced an appropriate distance from the structure. The root ball is represented by the center of the circle not the edge of the circle.

LC 3: A minimum of 90% of plant selections is compatible with site-specific conditions such as sunlight, soil types, and salinity. The plant schedules give both sun and shade tolerant plants to match the light conditions of the site. After the soil type is determined the FFL Plant Selection Guide can be consulted to determine if the plant is appropriate for the soil type.

LC 4: A minimum of 90% of plants are grouped with similar moisture and maintenance requirements. The majority of Florida-Friendly plants are low water use, with the exception of plants for naturally wet areas. Water thirsty annuals were not used and the perennials and shrubs have generally the same moisture requirements which means they can be in any plant bed and be compatible.

LC 5: Trees will provide shade to 30% of the total landscaped area at maturity. All of the plans in this book meet or exceed the requirement for 30% shade at maturity.

LC 6: Organic mulch is used and applied to a depth of 2 to 4 inches, leaving a 2-inch space around the base of plant. The plans are designed using the 9 Florida-Friendly principles for sustainable landscapes, including plants recommended in the FFL Plant Selection Guide. FFL Principle #4 recommends using mulch at a 3” depth

LC 7: All plants are installed according to the Florida-Friendly Best Management Practices for Protection of Water Resources by the Green Industries. The landscape installer must attest to this in an affidavit. Plan #8 in this book illustrates a planted buffer for a stormwater pond shoreline. FFL Principle #9 recommends a planted 10’ maintenance-free zone between turf and water to keep fertilizers and pesticides away from the water.

Other sections of the Florida Water Star Residential Criteria related to irrigation systems, indoor water use, and Florida Water Star Policies are not addressed in this book. Always check the Florida Water Star website at FloridaWaterStar.com for the latest requirements and revisions. It is recommended that an irrigation professional design and install the irrigation system to meet the criteria for micro irrigation and separate turf and landscaped bed zones.

Planting Plans

Front Yard with Driveway

Plan 1

Plan Options

Option 1 - BED A- Lowest Cost
Entry path and foundation plants

Plant ID Number and total plants
Trees- 2 and 3 (2 trees)
Shrubs- 6-14 (47 plants)
Groundcover- 15-16 (153 sq. ft.)
Remainder of front yard in turf

Option 2 - BED A & B - Medium Cost
Entry path, foundation plants and right property border

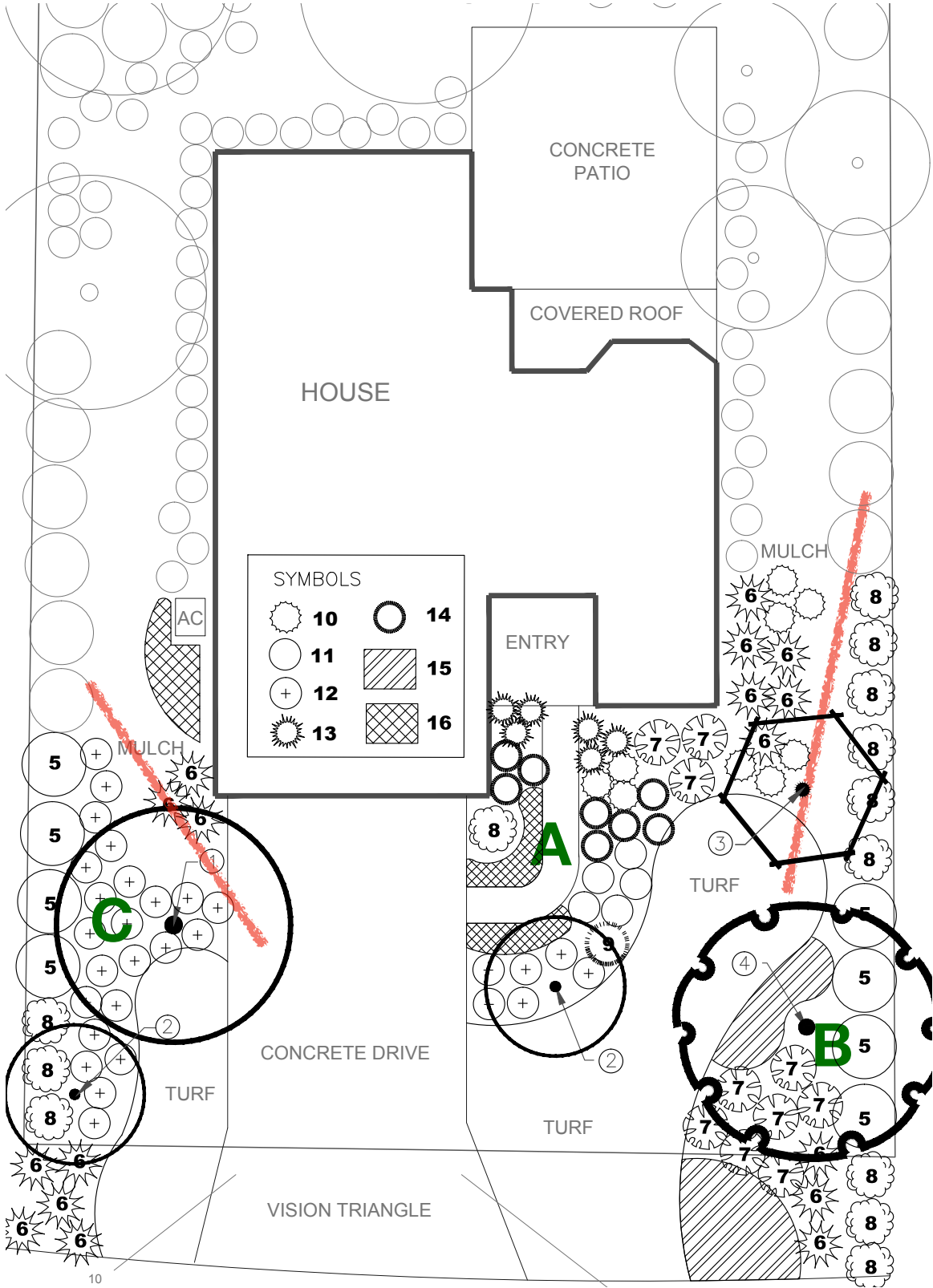
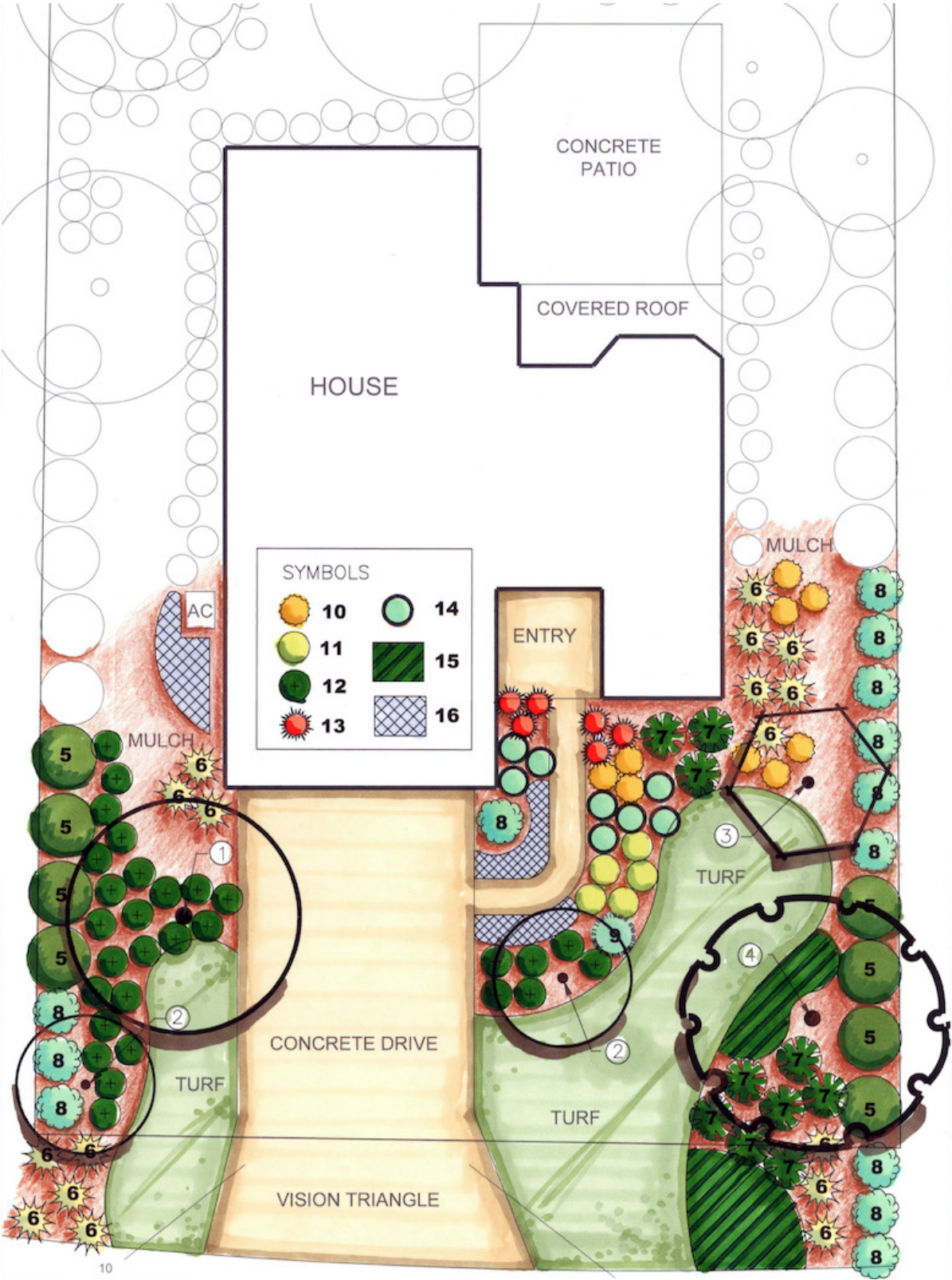
Plant ID Number and total plants
Trees- 2, 3, 4 (3)
Shrubs- 5-14 (70 plants)
Groundcover- 15,16 (373 sq. ft.)
Remainder of front yard in turf

Option 3 - BED A, B & C- Highest Cost
Entry path, foundation plants and property borders

Plant ID Number and total plants
Trees- 1, 2, 3 and 4 (5)
Shrubs- 5-14 (105 plants)
Groundcover- 15, 16 (373 sq. ft.)
Remainder of front yard in turf

Site Dimensions
Overall Site: 13,503 sq. ft. (.31 acres)
Front Yard without driveway: 5,058 sq. ft.
Front Yard: Depth-60 ft., Width- 95 ft.
Side Yards: Width- 20 ft
Tree canopy coverage: 1,799 sq. ft.
Driveway: 1,800 sq. ft.
House: 2,938 sq. ft.

Plant Totals
of species: 16
of trees and shrubs: 110
Groundcover: 373 sq. ft.
Front yard turf: 1,502 sq. ft.



Plant Schedules

Front Yard with Driveway

Plan 1

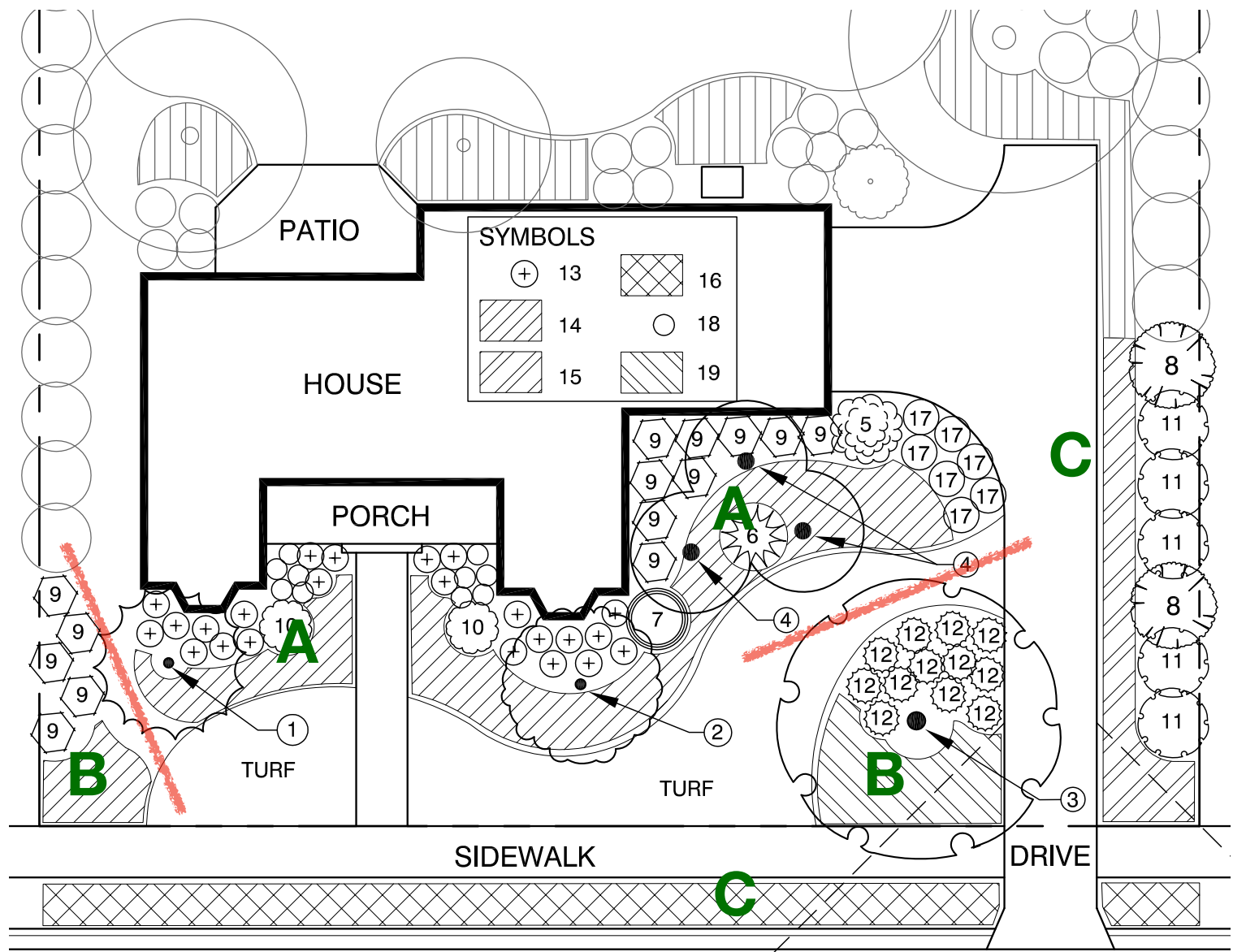
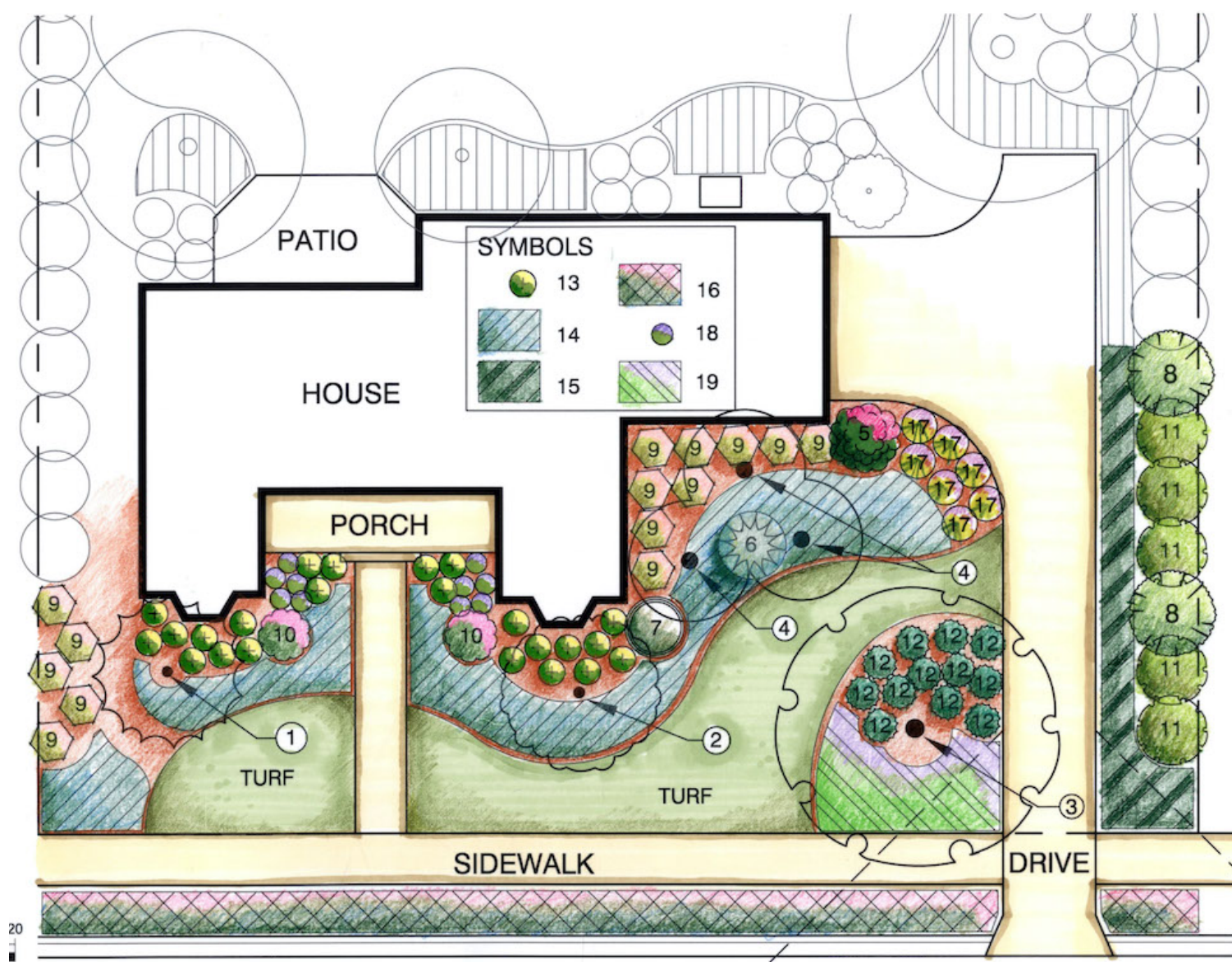
PLANT SCHEDULE FOR PLANTING PLAN #1: FRONT YARD WITH DRIVEWAY - ZONES 9A - 9B				
	SUN PLANTS (plus one alternative)		SHADE PLANTS	
NO.	BOTANICAL	COMMON NAME	BOTANICAL	COMMON NAME
	TREES			
1	Butia capitata	Jelly Palm	Trachycarpus fortunei	Windmill Palm
	Sabal Palmetto	Saw Cabbage Palm		
2	Callistemon spp.	Bottlebrush	Ilex vomitoria	Yaupon Holly
	Ligustrum japonicum	Japanese Privet		
3	Osmanthus americanus	Wild Olive	Chionanthus virginicus	Fringe Tree
	Magnolia figo	Banana Shrub		
4	Carya glabra	Hickory	Gordonia lasianthus	Loblolly Bay
	Fraxinus caroliniana	Carolina Ash, Water Ash		
	SHRUBS			
5	Raphiolepis indica	Indian Hawthorn	Spiraea spp.	Bridal Wreath
	Rosa spp.	Rose		
6	Spartina bakeri	Sand Cordgrass	Tripsacum floridana	Florida Gama Grass
	Muhlenbergia capillaris	Muhly Grass		
7	Dietes iridioides	African Iris	Agapanthus africanus	Lily of the Nile
	Belamcanda chinensis	Blackberry Lily		
8	Leucophyllum frutescens	Texas Sage	Justicia carnea	Jacobinia
	Lantana depressa	Weeping Lantana		
9	Zamia furfuracea	Cardboard Plant	Philodendron xanadu	Xanadu Philodendron
	Iris Neomarica caerulea 'Regina'	Giant Apostles' Iris		
10	Gazania spp.	Treasure Flower	Haemanthus multiflorus	Blood Lily
	Hippeastrum spp.	Amaryllis		
11	Justicia brandegeana	Shrimp Plant	Alpinia zerumbet 'variegata'	Variegated Shell Ginger
	Crinum spp.	Crinum Lily		
12	Liriope muscari	Liriope	Neomarica gracilis	Walking Iris
	Zamia pumila	Coontie		
13	Caladium Xhortulanum	Caladium	Kaempferia spp.	Peacock Ginger
	Solenostemon scuttellarioides	Coleus		
14	Dianella spp.	Flax Lily	Curcuma spp.	Curcuma
	Pentas lanceolata	Pentas		
	GRASSES, GROUND COVERS, PERENNIALS			
15	Hedera helix	English Ivy	Ardisia japonica	Japanese Ardisia
	Crytomium falcatum	Holly Fern		
16	Mimosa strigillosa	Sunshine Mimosa	Vinca major	Periwinkle
	Phyla nodiflora	Capeweed		

PLANT SCHEDULE FOR PLANTING PLAN #1: FRONT YARD WITH DRIVEWAY - ZONES 10A - 10B				
	SUN PLANTS (plus one alternative)		SHADE PLANTS	
NO.	BOTANICAL	COMMON NAME	BOTANICAL	COMMON NAME
	TREES			
1	Chrysalidocarpus lutescens	Yellow Butterfly Palm	NA	
	Ptychosperma macarthuri	Maccarthur Palm		
2	Callistemon spp.	Bottlebrush	Ilex vomitoria	Yaupon Holly
	Ligustrum japonicum	Japanese Privet		
3	Citharexylum spinosum	Fiddlewood	Ardisia escallonioides	Marlberry
	Cordia boissieri	White Geiger		
4	Lysiloma latisiliquum	Wild Tamarind	Acer rubrum	Red Maple
	Chorisia speciosa	Floss-silk Tree		
	SHRUBS			
5	Raphiolepis indica	Indian Hawthorn	Spiraea spp.	Bridal Wreath
	Rosa spp.	Rose		
6	Spartina bakeri	Sand Cordgrass	Tripsacum floridana	Florida Gama Grass
	Muhlenbergia capillaris	Muhly Grass		
7	Agapanthus africanus	Lily of the Nile	Justicia carnea	Jacobinia
	Alpinia spp.	Shell Ginger		
8	Leucophyllum frutescens	Texas Sage	Rumohra adiantiformis	Leather leaf Fern
	Lantana depressa	Weeping Lantana		
9	Gamolepis spp.	Bush Daisy	Strelitzia reginae	Bird of Paradise
	Rosmarinus spp.	Rosemary		
10	Gazania spp.	Treasure Flower	Haemanthus multiflorus	Blood Lily
	Hippeastrum spp.	Amaryllis		
11	Justicia brandegeana	Shrimp Plant	Lobularia maritima	Sweet Alyssum
	Pentas lanceolata	Pentas		
12	Liriope muscari	Liriope	Neomarica gracilis	Walking Iris
	Zamia pumila	Coontie		
13	Caladium Xhortulanum	Caladium	Kaempferia spp.	Peacock Ginger
	Solenostemon scuttellarioides	Coleus		
14	Dianella spp.	Flax Lily	Curcuma spp.	Curcuma
	Crinum spp.	Crinum Lily		
	GRASSES, GROUND COVERS, PERENNIALS			
15	Hedera helix	English Ivy	Ardisia japonica	Japanese Ardisia
	Crytomium falcatum	Holly Fern		
16	Mimosa strigillosa	Sunshine Mimosa	Vinca major	Periwinkle
	Phyla nodiflora	Capeweed		

Planting Plans

Front Yard with Side Entry Garage

Plan 2



Plan Options

Option 1 - BED A- Lowest Cost
Entry path and foundation plants

Plant ID Number and total plants
Trees- 1, 2 and 4 (5 trees)
Shrubs- 5, 6, 7, 9, 10, 13, 18 (54 plants)
Groundcover- 14 (563 sq. ft.)
Remainder of front yard in turf

Option 2 - BED A & B - Medium Cost
Entry path, foundation plants and corner planted islands

Plant ID Number and total plants
Trees- 1-4 (6 trees)
Shrubs- 5, 6, 7, 9, 10,12, 13, 18 (71 plants)
Groundcover- 14, 19 (803 sq. ft.)
Remainder of front yard in turf

Option 3 - BED A, B & C- Highest Cost
Entry path, foundation plants, islands, verge, and property boundary

Plant ID Number and total plants
Trees- 1-4 (6)
Shrubs- 5-13, 18 (78 plants)
Groundcover- 14-16, 19 (1,373 sq. ft.)
Turf: 1,502 sq. ft.

Site Dimensions
Overall Site: 10,018 sq. ft. (.23 acres)
Front Yard without driveway: 3,486 sq. ft.
Front Yard: Depth-34-40 ft., Width-113 ft.
Side Yards: Width- 10 ft. and 36 ft.
Tree canopy coverage: 1,084 sq. ft.
Driveway: 1,144 sq. ft.
House: 1,735 sq. ft.

Plant Totals
of species: 19
of trees and shrubs: 240
Groundcover: 373 sq. ft.
Front yard turf: 1,502 sq. ft.

Plant Schedules

Front Yard with Side Entry Garage

Plan 2

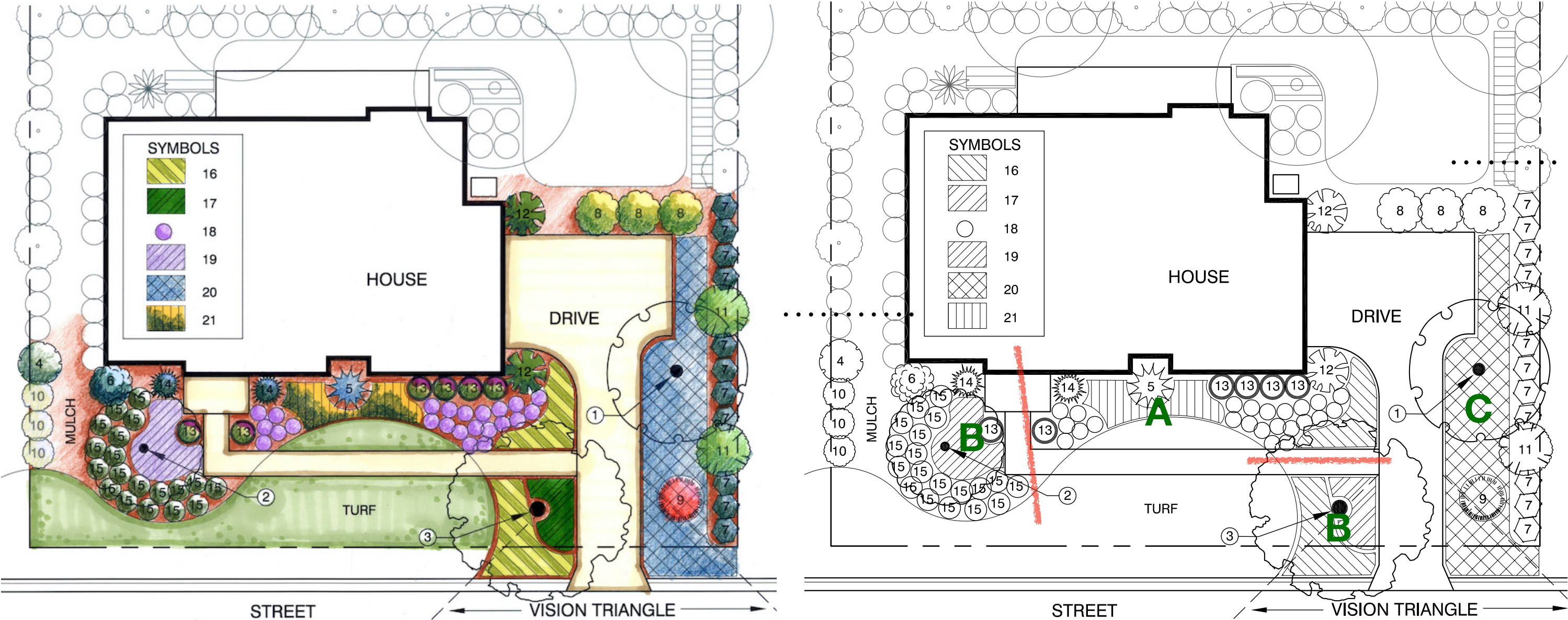
PLANT SCHEDULE FOR PLANTING PLAN #2: FRONT YARD WITH SIDE ENTRY GARAGE - ZONES 9A-9B				
	SUN PLANTS (plus one alternative)		SHADE PLANTS	
NO.	BOTANICAL	COMMON NAME	BOTANICAL	COMMON NAME
	TREES			
1	Ardisia escallonioides	Marlberry	Camellia japonica	Camellia
	Cordia boissieri	White Geiger		
2	Lagerstroemia indica	Crape Myrtle	Chionanthus virginicus	Fringe Tree
	Ilex vomitoria 'Pendula'	Weeping Yaupon Holly		
3	Ulmus alata	Winged Elm	NA	
	Quercus virginiana	Live Oak		
4	Sabal palmetto	Cabbage or Sabal Palm	Trachycarpus fortunei	Windmill Palm (smaller)
	SHRUBS			
5	Camelia sasanqua	Sasanqua Camelia	Agarista populifolia	Pipestem
	Lyonia ferruginea	Rusty Lyonia		
6	Dioone edule	Mexican cycad	Sabal minor	Blue-stem Palmetto
	Sereno repens	Saw Palmetto		
7	Gardenia jasminoides	Gardenia	Fatsia japonica	Fatsia
	Plumbago auriculata	Plumbago		
8	Ligustrum japonicum	Ligustrum	Ilex vomitoria	Yaupon Holly
	Brunfelsia grandiflora	Yesterday-Today-and-Tomorrow		
9	Gamolepsis chrysanthemoides	African Bush Daisy	Rhododendron 'Red Ruffles'	Red Ruffles Azalea
	Viburnum obovatum 'Densa'	Dwarf Walters Viburnum		
10	Rosa 'Knockout'	Knockout Rose	Clethra alnifolia	Summersweet
	Loropetalum chinense	Chinese Fringe Bush		
11	Viburnum suspensum	Sadankwa Viburnum	Illicium floridanum	Florida Anise
	Ilex cornuta 'nana'	Dwarf Burford Holly		
12	Zamia pumila	Coontie	Dryopteris erythosora	Autumn Fern
	Yucca filamentosa	Adam's Needle		
	GRASSES, GROUND COVERS, PERENNIALS			
13	Dietes bicolor	Yellow African Iris	Aspidistra elatior	Cast iron Plant
	Dietes iridoides	African Iris		
14	Juniperus chinensis 'Parsonii'	Parson's Juniper	Cyrtomium falcatum	Holly Fern
	Lantana montividentis	Trailing Lantana		
15	Liriope muscari 'Evergreen Giant'	Evergreen Giant Liriope	Thelypteris kunthii	Southern Shield Fern
	Dianella tasmanica	Flax Lily		
16	Mimosa strigillosa	Sunshine mimosa	Ophiopogon japonicus	Mondo Grass
	Dyschoriste oblongifolia	Twin Flower		
17	Muhlenbergia capillaris	Muhly Grass	Dryopteris erythosora	Autumn Fern
	Tripsacum floridana	Florida Gamma Grass		
18	Pentas lanceolata	Pentas	Impatiens spp.	Impatiens
	Agapanthus africanus	Lily of the Nile		
19	Evolvulus glomeratus	Blue Daze	Caladium X hortulanum	Caladium
	Trachelopsermum asiaticum	Asiatic Jasmine		

PLANT SCHEDULE FOR PLANTING PLAN #2: FRONT YARD WITH SIDE ENTRY GARAGE - ZONES 10A-10B				
	SUN PLANTS (plus one alternative)		SHADE PLANTS	
NO.	BOTANICAL	COMMON NAME	BOTANICAL	COMMON NAME
	TREES			
1	Ardisia escallonioides	Marlberry	Myricanthes fragrans	Simpson's Stopper
	Cordia boissieri	White Geiger		
2	Citharexylum spinosum	Fiddlewood	Capparis cynophallophora	Jamaica Caper Tree
	Callistemon viminalis	Weeping Bottlebrush		
3	Chorisia speciosa	Floss-silk Tree	NA	
	Persea americana	Avocado		
4	Psuedophoenix sargentii	Sargents Palm	Ravenea rivularis	Majesty Palm
	Woodyetia bifurcata	Foxtail Palm		
	SHRUBS			
5	Hibiscus rosa-sinensis	Chinese Hibiscus	Tabernaemontana divaricata	Crape Jasmine
	Lyonia ferruginea	Rusty Lyonia		
6	Dioone edule	Mexican cycad	Sabal minor	Blue-stem Palmetto
	Sereno repens	Saw Palmetto		
7	Gardenia augusta	Gardenia	Fatsia japonica	Fatsia
	Plumbago auriculata	Plumbago		
8	Calliandra haematocephala	Red Powderpuff	Hamelia patens	Firebush
	Brunfelsia grandiflora	Yesterday-Today-and-Tomorrow		
9	Gamolepsis chrysanthemoides	African Bush Daisy	Costus speciosa 'variegata'	Variegated Crape
	Viburnum obovatum 'Densa'	Dwarf Walters Viburnum		
10	Rosa 'Knockout'	Knockout Rose	Zamia furfuracea	Cardboard Plant
	Strelitzia reginae	Bird of Paradise		
11	Jasminum nitidum	Star Jasmine	Psychotria nervosa	Wild Coffee
	Tecoma stans	Yellow Elder		
12	Zamia pumila	Coontie	Dryopteris erythosora	Autumn Fern
	Yucca filamentosa	Adam's Needle		
	GRASSES, GROUND COVERS, PERENNIALS			
13	Dietes bicolor	Yellow African Iris	Aspidistra elatior	Cast iron Plant
	Dietes iridoides	African Iris		
14	Ernodea littoralis	Golden Creeper	Cyrtomium falcatum	Holly Fern
	Lantana montividentis	Trailing Lantana		
15	Eragrostis elliottii	Elliott's Lovegrass	Thelypteris kunthii	Southern Shield Fern
	Dianella tasmanica	Flax Lily		
16	Mimosa strigillosa	Sunshine mimosa	Ophiopogon japonicus	Mondo Grass
	Dyschoriste oblongifolia	Twin Flower		
17	Muhlenbergia capillaris	Muhly Grass	Dryopteris erythosora	Autumn Fern
	Tripsacum floridana	Florida Gamma Grass		
18	Pentas lanceolata	Pentas	Impatiens spp.	Impatiens
	Agapanthus africanus	Lily of the Nile		
19	Evolvulus glomeratus	Blue Daze	Caladium X hortulanum	Caladium
	Trachelopsermum asiaticum	Asiatic Jasmine		

Planting Plans

Front Yard with Entry Walk from Driveway

Plan 3



Plan Options

- Option 1 - BED A- Lowest Cost**
Entry path and foundation plants

Plant ID Number and total plants
Trees- none
Shrubs- 5, 12, 13, 14, 18 (31 plants)
Groundcover- 16, 21 (160 sq. ft.)
Remainder of front yard in turf
- Option 2 - BED A & B - Medium Cost**
Entry path, foundation plants and left side of driveway

Plant ID Number and total plants
Trees- 2 and 3 (2 trees)
Shrubs- 5, 6, 12-15 (57 plants)
Groundcover- 16, 17, 19 (440 sq. ft.)
Remainder of front yard in turf
- Option 3 - BED A, B & C- Highest Cost**
Entry path, foundation plants, and left and right side of driveway

Plant ID Number and total plants
Trees- 1, 2, 3 (3)
Shrubs- 4-14, 15, 18 (75 plants)
Groundcover- 16, 17, 19, 20, 21 (881 sq. ft.)
Turf: 1,502 sq. ft.

Site Dimensions
Overall Site: 9,583 sq. ft. (.22 acres)
Front Yard without driveway: 3,030 sq. ft.
Front Yard: Depth- 27 ft., Width-110 ft.
Side Yards: Width- 12 ft. and 37 ft.
Tree canopy coverage: 1,086
Driveway: 1,144 sq. ft.
House: 2,000 sq. ft.

Plant Totals
of species: 21
of trees and shrubs: 78
Groundcover: 881 sq. ft.
Front yard turf: 1,502 sq. ft.

Plant Schedules

Front Yard with Entry Walk from Driveway

Plan 3

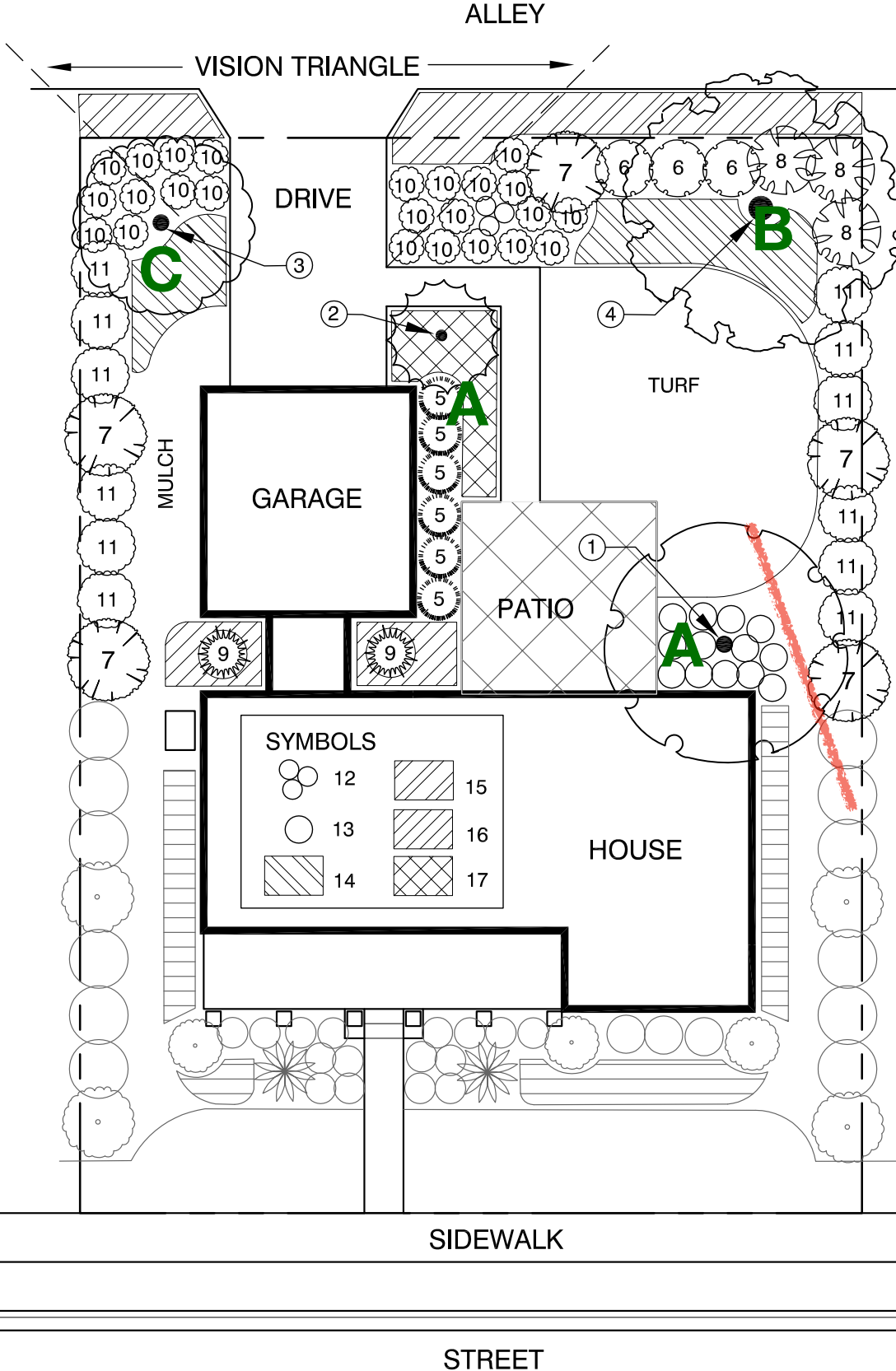
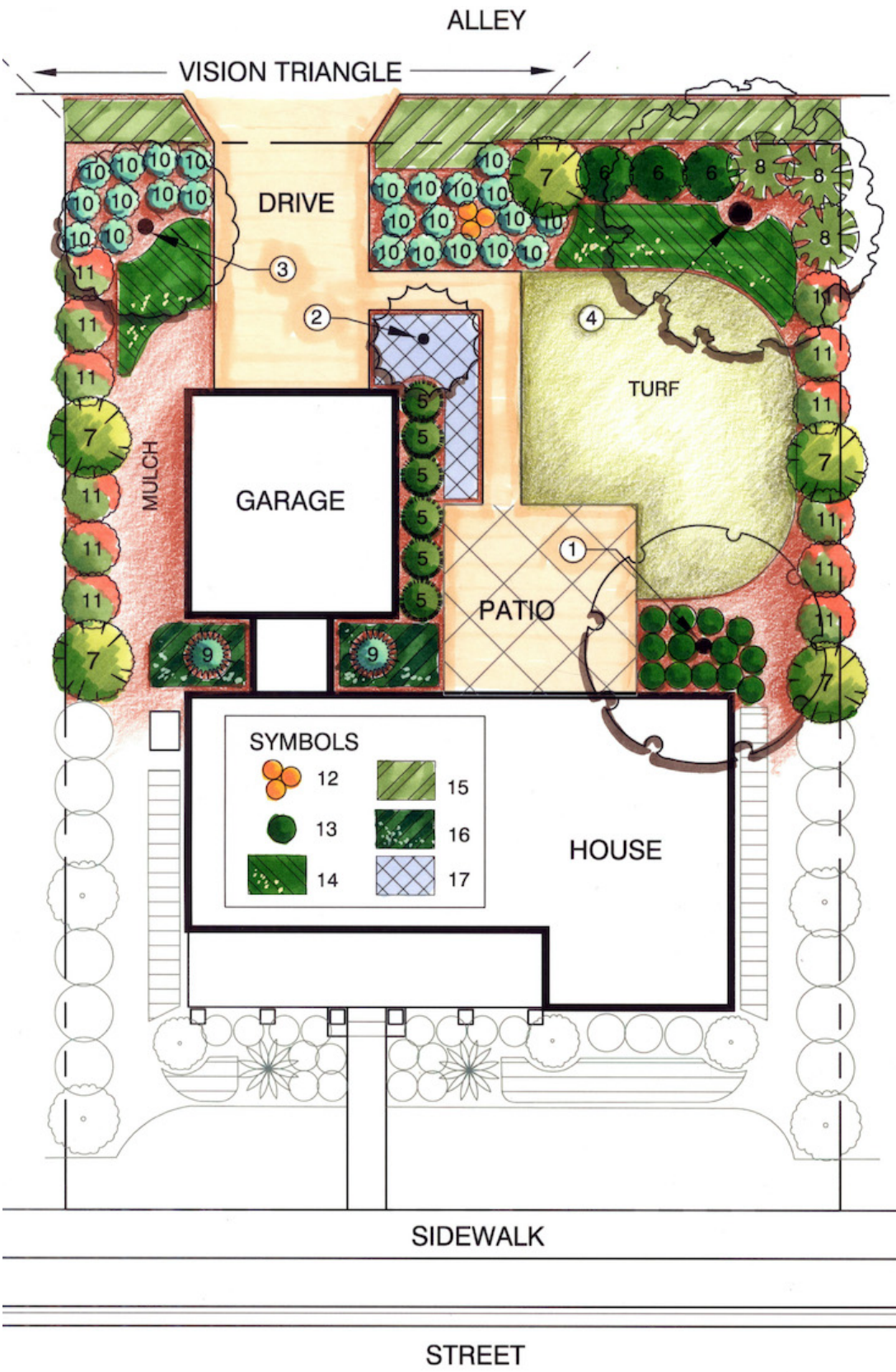
PLANT SCHEDULE FOR PLANTING PLAN #3: FRONT YARD ENTRY WALK FROM DRIVEWAY - ZONES 9A-9B				
	SUN PLANTS (plus one alternative)		SHADE PLANTS	
NO.	BOTANICAL	COMMON NAME	BOTANICAL	COMMON NAME
	TREES			
1	Acer rubrum	Red Maple	NA	
	Persea borbonia	Red Bay		
2	Vitex agnus-castus	Chaste Tree	Ardisia escallonioides	Marlberry
	Cordia boissieri	White Geiger		
3	Elaeocarpus decipiens	Japanese Blueberry	NA	
	Quercus virginiana	Live Oak		
	SHRUBS			
4	Acca sellowiana	Pineapple Guava	Gardenia jasminoides	Gardenia
	Rhododendron Indicum	Formosa Azalea		
5	Dioone edule	Mexican cycad	Rhapidophyllum hystrix	Needle Palm
	Chamaerops humilis	European Fan Palm		
6	Hydrangea quercifolia	Oakleaf Hydrangea	Philodendron bipinnatifidum	Philodendron Selloum
	Malvaviscus arboreus	Turk's Cap		
7	Ilex vomitoria 'Stokes Dwarf'	Dwarf Yaupon Holly	Sabal minor	Blue-stem Palmetto
	Myrica pusilla	Dwarf Wax Myrtle		
8	Carissa macrocarpa	Natal Plum	Camelia sasanqua	Sasanqua Camelia
	Podocarpus macrophyllus	Podocarpus		
9	Lagerstroemia indica 'Dwarf Red'	Dwarf Crape Myrtle	Callicarpa americana	Beauty Berry
	Hibiscus syriacus	Rose of Sharon		
10	Loropetalum chinense 'firedance'	Dwarf Loropetalum	Rhododendron 'Encore'	Encore Azalea
	Leucophyllum frutescens	Texas Sage		
11	Ligustrum japonicum	Ligustrum	Hamelia patens	Firebush
	Nerium oleander	Oleander		
12	Philodendron bipinnatifidum	Philodendron Selloum	Fatsia japonica	Fatsia (evergreen)
	Hydrangea quercifolia	Oakleaf Hydrangea (deciduous)		
13	Gamolepsis chrysanthemoides	African Bush Daisy	Illicium floridanum	Florida Anise
	Rosa 'Knockout'	Knockout Rose		
14	Sabal minor	Blue-stem Palmetto	Zamia pumila	Coontie
	Sereno repens	Saw Palmetto		
15	Viburnum obovatum 'Densa'	Dwarf Walters Viburnum	Gardenia jasminoides 'Radicans'	Dwarf Gardenia
	Rhaphiolepis indica	Indian Hawthorn		
	GRASSES, GROUND COVERS, PERENNIALS			
16	Dianella tasmanica 'variegata'	Variegated Flax Lily	Liriope muscari 'Evergreen Giant'	Evergreen Giant Liriope
	Ophiopogon intermedius 'Aztec'	Aztec Grass		
17	Dryopteris erythosora	Autumn Fern	Cyrtomium falcatum	Holly Leaf Fern
	Tripsacum floridana	Florida Gamma Grass		
18	Gardenia augusta 'Radicans'	Dwarf Gardenia	Caladium X hortulanum	Caladium
	Vinca major	Periwinkle		
19	Pentas lanceolata	Pentas	Impatiens wallerana	Impatiens
	Hemerocallis spp.	Daylily		
20	Trachelopsernum asiaticum	Asiatic Jasmine	Neomarica gracilis	Walking Iris
	Juniperus conferta	Shore Juniper		
21	Tulbaghia violacea	Society Garlic	Aspidistra elatior 'Milky Way'	Milky Way Aspidistra
	Dietes bicolor	Yellow African Iris		

PLANT SCHEDULE FOR PLANTING PLAN #3: FRONT YARD ENTRY WALK FROM DRIVEWAY - ZONES 10A-10B				
	SUN PLANTS (plus one alternative)		SHADE PLANTS	
NO.	BOTANICAL	COMMON NAME	BOTANICAL	COMMON NAME
	TREES			
1	Podocarpus gracilior	Weeping Podocarpus	NA	
	Persea borbonia	Red Bay		
2	Tabebuia heterophylla	Pink Trumpet Tree	Ardisia escallonioides	Marlberry
	Cordia boissieri	White Geiger		
3	Elaeocarpus decipiens	Japanese Blueberry	NA	
	Quercus virginiana	Live Oak		
	SHRUBS			
4	Acca sellowiana	Pineapple Guava	Gardenia jasminoides	Gardenia
	Duranta erecta	Golden Dewdrop		
5	Dioone edule	Mexican cycad	Rhapidophyllum hystrix	Needle Palm
	Chamaerops humilis	European Fan Palm		
6	Calliandra haematocephala	Red Powderpuff	Philodendron bipinnatifidum	Philodendron Selloum
	Malvaviscus arboreus	Turk's Cap		
7	Ilex vometoria 'Stokes Dwarf'	Dwarf Yaupon Holly	Sabal minor	Blue-stem Palmetto
	Myrica pusilla	Dwarf Wax Myrtle		
8	Carissa macrocarpa	Natal Plum	Tabernaemontana divaricata	Crape Jasmine
	Podocarpus macrophyllus	Podocarpus		
9	Lagerstroemia indica 'Dwarf Red'	Dwarf Crape Myrtle	Callicarpa americana	Beauty Berry
	Hibiscus syriacus	Rose of Sharon		
10	Strelitzia reginae	Bird of Paradise	Crossandra spp.	Firecracker Flower
	Zamia furfuracea	Cardboard Plant		
11	Ligustrum japonicum	Ligustrum	Hamelia patens	Firebush
	Nerium oleander	Oleander		
12	Philodendron bipinnatifidum	Philodendron Selloum	Fatsia japonica	Fatsia (evergreen)
	Brunfelsia grandiflora	Yesterday-Today-Tomorrow		
13	Gamolepsis chrysanthemoides	African Bush Daisy	Zamia furfuracea	Cardboard Plant
	Rosa 'Knockout'	Knockout Rose		
14	Sabal minor	Blue-stem Palmetto	Zamia pumila	Coontie
	Sereno repens	Saw Palmetto		
15	Viburnum obovatum 'Densa'	Dwarf Walters Viburnum	Gardenia augusta "Radicans"	Dwarf Gardenia
	Lantana montevidensis	Trailing Lantana		
	GRASSES, GROUND COVERS, PERENNIALS			
16	Dianella tasmanica 'variegata'	Variegated Flax Lily	Evolvulus glomeratus	Blue Daze
	Ophiopogon intermedius 'Aztec'	Aztec Grass		
17	Dryopteris erythosora	Autumn Fern	Cyrtomium flacatum	Holly Leaf Fern
	Tripsacum floridana	Florida Gamma Grass		
18	Gardenia augusta 'Radicans'	Dwarf Gardenia	Caladium X hortulanum	Caladium
	Ernodea littoralis	Golden Creeper		
19	Pentas lanceolata	Pentas	Impatiens wallerana	Impatiens
	Hemerocallis spp.	Daylily		
20	Trachelopsernum asiaticum	Asiatic Jasmine	Neomarica gracilis	Walking Iris
	Scaevola plumieri	Inkberry		
21	Tulbaghia violacea	Society Garlic	Aspidistra elatior 'Milky Way'	Milky Way Aspidistra
	Dietes bicolor	Yellow African Iris		

Planting Plans

Back Yard with Alley Driveway

Plan 4



Plan Options

Option 1 - BED A- Lowest Cost
Patio and garage foundation plants

Plant ID Number and total plants
Trees- 1 and 2 (2)
Shrubs- 5, 9, 13 (21 plants)
Groundcover- 16, 17 (280 sq. ft.)
Remainder of back yard in turf

Option 2 - BED A & B - Medium Cost
Patio and garage foundation plants and right side of driveway

Plant ID Number and total plants
Trees- 1, 2 and 4 (3 trees)
Shrubs- 5-13 (51 plants)
Groundcover- 14-17 (789 sq. ft.)
Remainder of back yard in turf

Option 3 - BED A, B & C- Highest Cost
Patio and garage foundation plants, and left and right side of driveway

Plant ID Number and total plants
Trees- 1, 2, 3 and 4 (4)
Shrubs- 5-13 (69 plants)
Groundcover- 14-17 (959 sq. ft.)
Turf: 1,502 sq. ft.

Site Dimensions
Overall Site: 8,800 sq. ft. (.20 acres)
Back Yard without driveway, garage: 3,870 sq. ft.
Back Yard: Depth- 60 ft., Width-80 ft.
Side Yards: Width- 12 ft.
Tree canopy coverage: 1,322
Driveway: 480 sq. ft., Patio: 110 sq. ft.
House: 1,510 sq. ft.

Plant Totals
of species: 17
of trees and shrubs: 73
Groundcover: 959 sq. ft.
Back yard turf: 882 sq. ft.

Plant Schedules

Back Yard with Alley Driveway

Plan 4

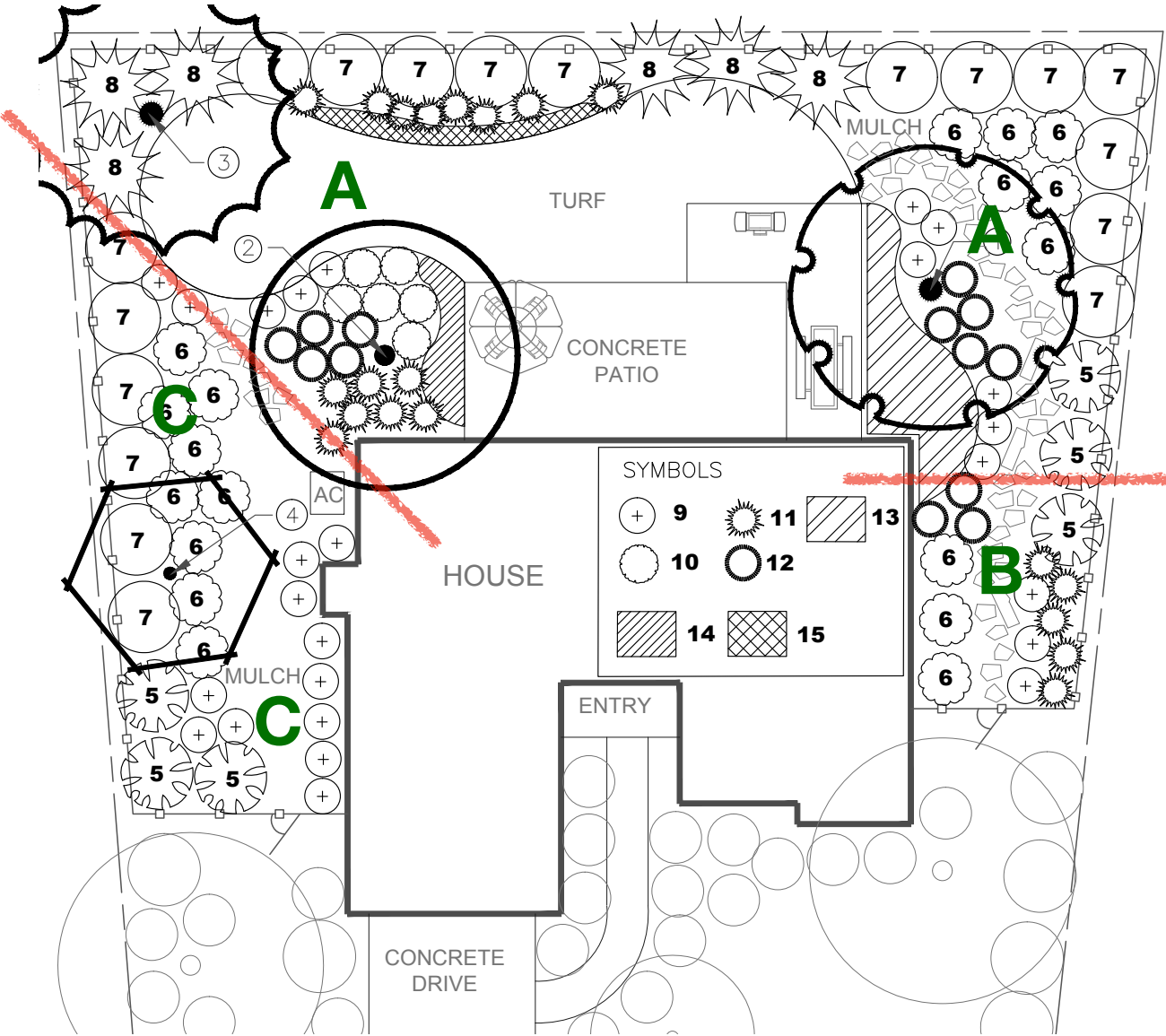
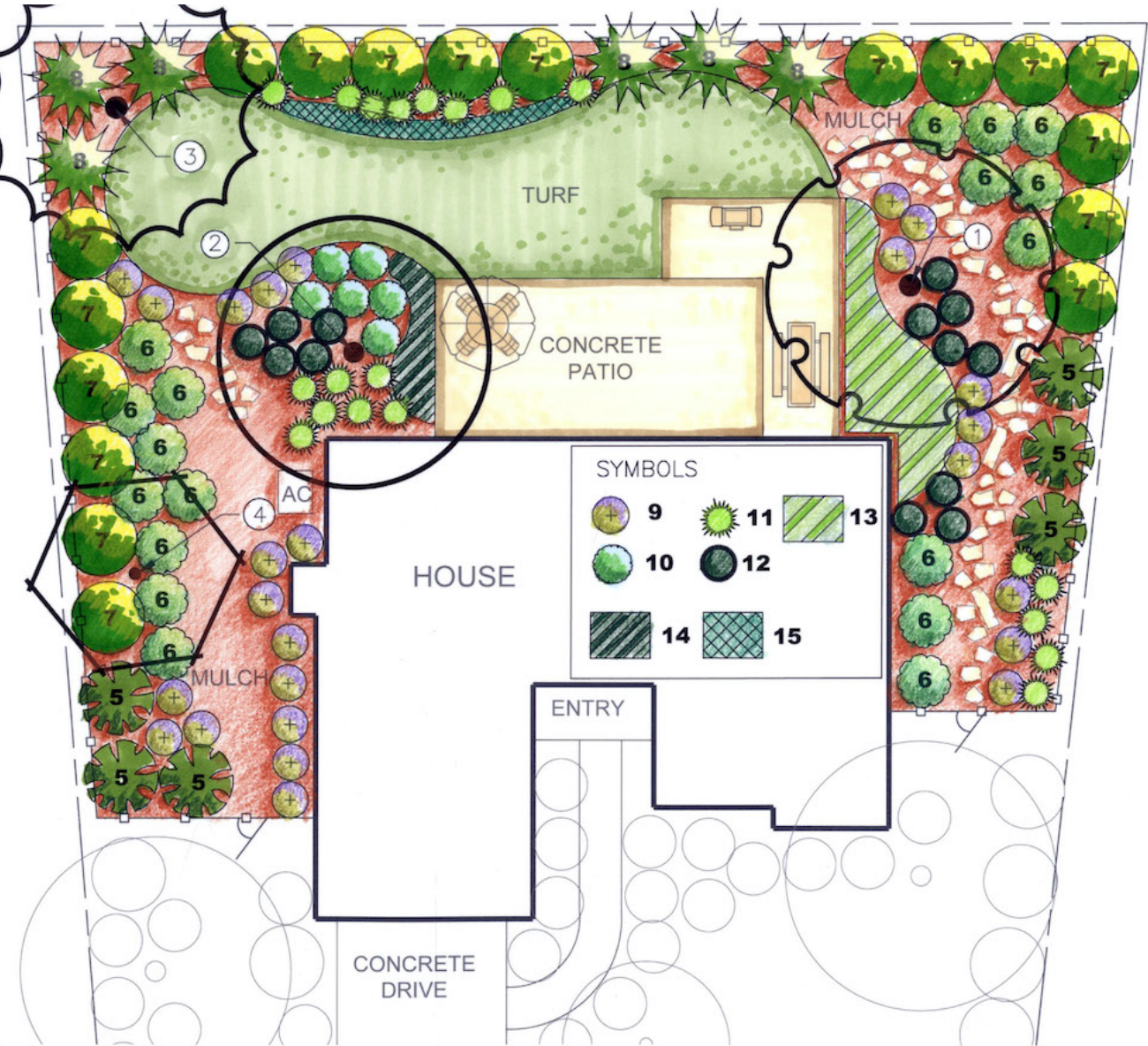
PLANT SCHEDULE FOR PLANTING PLAN #4: BACK YARD WITH ALLEY DRIVEWAY - ZONES 9A-9B				
	SUN PLANTS (plus one alternative)		SHADE PLANTS	
NO.	BOTANICAL	COMMON NAME	BOTANICAL	COMMON NAME
	TREES			
1	Elaeocarpus decipiens	Japanese Blueberry	NA	
	Ulmus alata	Winged Elm		
2	Osmanthus fragrans	Tea Olive	Camellia japonica	Camellia
	Eugenia foetida	Spanish Stopper		
3	Prunus umbelatta	Flatwoods Plum	Ilex vomitoria	Yaupon Holly
	Coccoloba uvifera	Seagrape		
4	Magnolia grandiflora	Southern Magnolia	NA	
	Acer rubrum	Red Maple		
	SHRUBS			
5	Bambusa multiplex 'Riviereorum'	Chinese Goddess Bamboo	Chamaedorea microspadix	Bamboo Palm
	Bambusa multiplex 'Golden Goddess'			
6	Ilex cornuta 'nana'	Dwarf Burford Holly	Viburnum suspensum	Sandankwa Viburnum
	Lyonia ferruginea	Rusty Lyonia		
7	Ligustrum japonicum	Ligustrum	Ilex vomitoria	Yaupon Holly
	Illicium parviflorum	Yellow Anise		
8	Philodendron bipinnatifidum	Philodendron Selloum	Fatsia japonica	Fatsia (evergreen)
	Hydrangea quercifolia	Oakleaf Hydrangea (deciduous)		
9	Rhapidophyllum hystrix	Needle Palm	Sabal minor	Blue-stem Palmetto
	Agave americana	Century Plant		
10	Rhododendron 'Red Ruffles'	Red Ruffles Azalea	Gardenia jasminoides 'Radicans'	Dwarf Gardenia
	Leucophyllum frutescens	Texas Sage		
11	Rosa 'Knockout'	Knockout Rose	Clethra alnifolia	Summersweet
	Loropetalum chinense	Chinese Fringe Bush		
	GRASSES, GROUND COVERS, PERENNIALS			
12	Canna x generalis	Canna Lily	Costus spp.	Spiral Ginger
	Crinum asiaticum	Grand Crinum Lily		
13	Cyrtomium falcatum	Holly Leaf Fern	Zamia pumila	Coontie
	Dietes bicolor	Yellow African Iris		
14	Liriope muscari 'Evergreen Giant'	Evergreen Giant Liriope	Cyrtomium falcatum	Holly Fern
	Dianella tasmanica	Flax Lily		
15	Muhlenbergia capillaris	Muhly Grass	Dryopteris erythosora	Autumn Fern
	Tripsacum floridana	Florida Gamma Grass		
16	Ophiopogon japonicus	Mondo	Aspidistra elatior 'Milky Way'	Milky Way Aspidistra
	Juniperus conferta	Shore Juniper		
17	Trachelopsermum asiaticum	Asiatic Jasmine	Caladium X hortulanum	Caladium
	Glandularia tampensis	Tampa Vervain		

PLANT SCHEDULE FOR PLANTING PLAN #4: BACK YARD WITH ALLEY DRIVEWAY - ZONES 10A-10B				
	SUN PLANTS (plus one alternative)		SHADE PLANTS	
NO.	BOTANICAL	COMMON NAME	BOTANICAL	COMMON NAME
	TREES			
1	Elaeocarpus decipiens	Japanese Blueberry	NA	
	Tabebuia impetiginosa	Purple Trumpet Tree		
2	Acacia farnesiana	Sweet Acacia	Ardisia escallonioidies	Marlberry
	Eugenia foetida	Spanish Stopper		
3	Olea europaea	Olive	Ilex vometoria	Yaupon Holly
	Coccoloba uvifera	Seagrape		
4	Sideroxylon salicifolium	Buckthorn	NA	
	Jacaranda mimosifolia	Jacaranda		
	SHRUBS			
5	Bambusa multiplex 'Riviereorum'	Chinese Goddess Bamboo	Chamaedorea microspadix	Bamboo Palm
	Bambusa multiplex 'Golden Goddess'			
6	Acalypha hispida	Chenille Plant	Viburnum suspensum	Sandankwa Viburnum
	Lyonia ferruginea	Rusty Lyonia		
7	Ligustrum japonicum	Ligustrum	Ilex vometoria	Yaupon Holly
	Galphimia glauca	Thryallis		
8	Philodendron bipinnatifidum	Philodendron Selloum	Fatsia japonica	Fatsia (evergreen)
	Codiaeum variegatum	Croton		
9	Rhapidophyllum hystrix	Needle Palm	Sabal minor	Blue-stem Palmetto
	Agave americana	Century Plant		
10	Lantana depressa	Pineland Lantana	Gardenia augusta "Radicans"	Dwarf Gardenia
	Leucophyllum frutescens	Texas Sage		
11	Rosa 'Knockout'	Knockout Rose	Brunfelsia grandiflora	Yesterday-Today-Tomorrow
	Jatropha integerrima	Peregrina		
	GRASSES, GROUND COVERS, PERENNIALS			
12	Canna x generalis	Canna Lily	Costus spp.	Spiral Ginger
	Crinum asiaticum	Grand Crinum Lily		
13	Cyrtomium falcatum	Holly Leaf Fern	Zamia pumila	Coontie
	Dietes bicolor	Yellow African Iris		
14	Dianella tasmanica	Flax Lily	Cyrtomium falcatum	Holly Fern
	Lantana montevidensis	Trailing Lantana		
15	Muhlenbergia capillaris	Muhly Grass	Dryopteris erythosora	Autumn Fern
	Tripsacum floridana	Florida Gamma Grass		
16	Ophiopogon japonicus	Mondo	Aspidistra elatior 'Milky Way'	Milky Way Aspidistra
	Evolvulus glomeratus	Blue Daze		
17	Trachelopsermum asiaticum	Asiatic Jasmine	Caladium X hortulanum	Caladium
	Glandularia tampensis	Tampa Vervain		

Planting Plans

Back Yard with Patio

Plan 5



Plan Options

Option 1 - BED A- Lowest Cost
Perimeter and foundation plants

Plant ID Number and total plants
Trees- 1, 2 and 3 (3 trees)
Shrubs- 5-12 (66 plants)
Groundcover- 13-15 (210 sq. ft.)
Remainder of back yard in turf

Option 2 - BED A & B - Medium Cost
Perimeter, foundation plants, and right side yard

Plant ID Number and total plants
Trees- 1, 2 and 3 (3 trees)
Shrubs- 5-12 (81 plants)
Groundcover- 13-15 (210 sq. ft.)
Remainder of back yard in turf

Option 3 - BED A, B & C- Highest Cost
Perimeter, foundation plants, and left and right side yard

Plant ID Number and total plants
Trees- 1-4 (4)
Shrubs- 5-12 (112 plants)
Groundcover- 13-15 (210 sq. ft.)
Turf: 855 sq. ft.

Site Dimensions
Overall Site: 9,680 sq. ft. (.22 acres)
Back Yard without patio: 3,060 sq. ft.
Back Yard: Depth- 38 ft., Width-100 ft.
Side Yards: Width- 12 ft. and 37 ft.
Tree canopy coverage: 1,992 sq. ft.
Patio: 740 sq. ft.
House: 2,050 sq. ft.

Plant Totals
of species: 15
of trees and shrubs: 112
Groundcover: 210 sq. ft.
Front yard turf: 855 sq. ft.

Plant Schedules

Back Yard with Patio

Plan 5

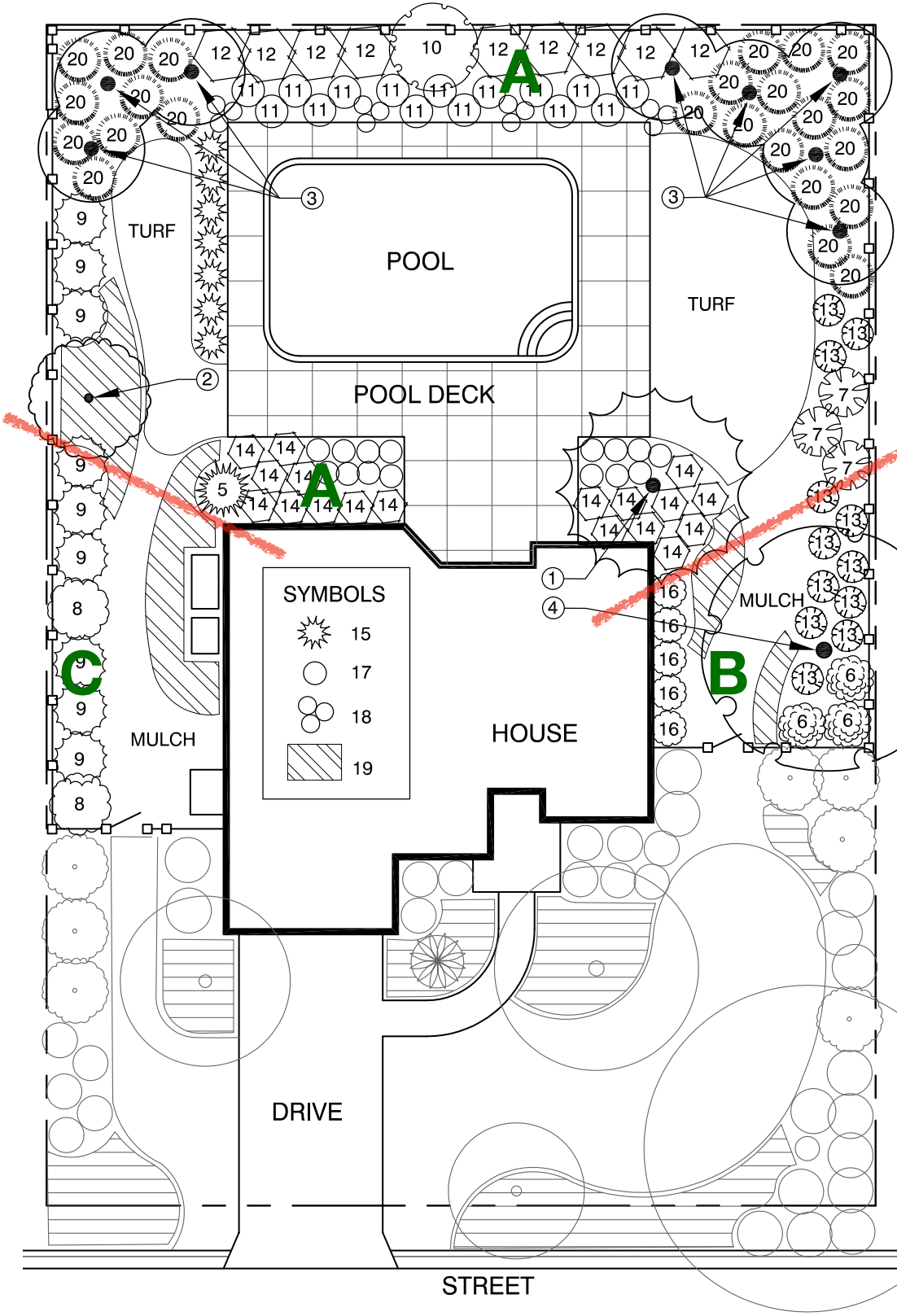
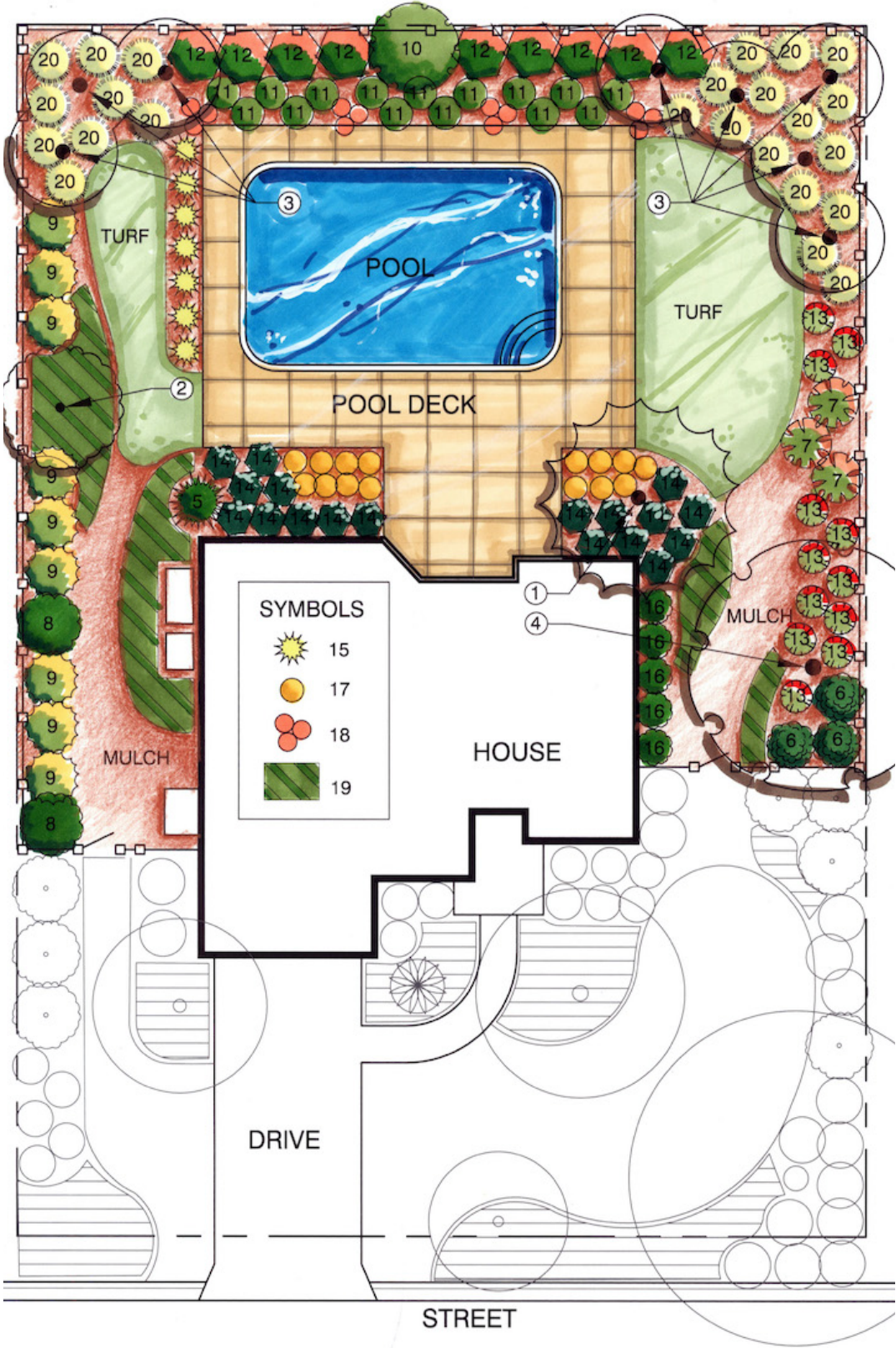
PLANT SCHEDULE FOR PLANTING PLAN #5: BACKYARD WITH PATIO - ZONES 9A - 9B				
	SUN PLANTS (plus one alternative)		SHADE PLANTS	
NO.	BOTANICAL	COMMON NAME	BOTANICAL	COMMON NAME
	TREES			
1	Gordonia lasianthus	Loblolly Bay	Myrica cerifera	Wax Myrtle
	Betula nigra	River Birch		
2	Persea palustris	Swamp Bay	Cercis canadensis	Eastern Redbud
	Crataegus spp.	Hawthorn		
3	Prunus umbellata	Flatwoods Plum	Asimina spp.	Pawpaw
	Butia capitata	Pindo Palm		
4	Chionanthus virginicus	Fringetree	Ilex decidua	Possum Haw
	Cercis canadensis	Eastern Redbud		
	SHRUBS			
5	Zamia furfuracea	Cardboard Plant	Mahonia fortunei	Holly Grape
	Crinum spp.	Crinum Lily		
6	Zamia floridana	Coontie	Neomarica gracilis	Walking Iris
	Liriope muscari	Liriope		
7	Buddleia lindleyana	Butterfly Bush	Berberis thunbergii	Japanese Barberry
	Brunfelsia grandiflora	Yesterday, Today & Tomorrow		
8	Clethra alnifolia	Sweet Pepperbush	Itea virginica	Virginia Willow
	Vaccinium arboreum	Sparkleberry		
9	Eragrostis spectabilis	Purple Lovegrass	agapanthus praecox ssp. orientalis	Agapanthus
	Eragrostis elliotii	Elliot's Lovegrass		
10	Agapanthus africanus	Lily of the Nile	Caladium xhortulanum	Caladium
	Belamcanda chinensis	Blackberry Lily		
11	Aloe spp.	Aloe	Cyrtomium falcatum	Holly Fern
	Conradina spp.	Scrub Mints		
12	Rosmarinus spp.	Rosemary	Dryopteris spp.	Autumn Fern
	Blechnum serrulatum	Swamp Fern		
	GRASSES, GROUND COVERS, PERENNIALS			
13	Dianella spp.	Flax Lily	Liriope muscari	Liriope
	Liriope muscari 'Aztec'	Aztec Liriope		

PLANT SCHEDULE FOR PLANTING PLAN #5: BACKYARD WITH PATIO - ZONES 10A - 10B				
	SUN PLANTS (plus one alternative)		SHADE PLANTS	
NO.	BOTANICAL	COMMON NAME	BOTANICAL	COMMON NAME
	TREES			
1	Bursera simaruba	Gumbo Limbo	Ilex cassine	Dahoon Holly
	Ficus citrifolia	Shortleaf Fig		
2	Tabebuia chrysotricha	Yellow Trumpet Tree	Podocarpus gracillior	Weeping Podocarpus
	Tabebuia heterophylla	Pink Trumpet Tree		
3	Sabal palmetto	Cabbage Palm	Asimina spp.	Pawpaw
	Butia capitata	Pindo Palm		
4	Lagerstroemia indica	Crepe Myrtle	Myrica cerifera	Wax Myrtle
	Ligustrum Japonicum	Japanese Privet		
	SHRUBS			
5	Zamia furfuracea	Cardboard Plant	Nephrolepis biserrata	Giant Sword Fern
	Crinum spp.	Crinum Lily		
6	Zamia floridana	Coontie	Cyrtomium falcatum	Holly Fern
	Liriope muscari	Liriope		
7	Buddleia lindleyana	Butterfly Bush	Vitex agnus-castus	Chaste Tree
	Brunfelsia grandiflora	Yesterday, Today & Tomorrow		
8	Galphimia gracilis	Rain-of-Gold	Schefflera arboricola	Dwarf Schefflera
	Duranta erecta	Golden Dew Drop		
9	Eragrostis spectabilis	Purple Lovegrass	Agapanthus praecox ssp. orientalis	Lily of the Nile
	Eragrostis elliotii	Elliot's Lovegrass		
10	Agapanthus praecox ssp. orientalis	Lily of the Nile	Pteridium aquilinum	Bracken Fern
	Belamcanda chinensis	Blackberry Lily		
11	Aloe spp.	Aloe	Dianella spp.	Flax Lily
	Yucca filamentosa	Adam's Needle		
12	Rosmarinus spp.	Rosemary	Dryopteris spp.	Autumn Fern
	Blechnum serrulatum	Swamp Fern		
	GRASSES, GROUND COVERS, PERENNIALS			
13	Dianella spp.	Flax Lily	Liriope muscari	Liriope
	Liriope muscari 'Aztec'	Aztec Liriope		

Planting Plans

Back Yard Open Pool with Deck

Plan 6



Plan Options

Option 1 - BED A- Lowest Cost

Pool deck and perimeter plants

Plant ID Number and total plants
Trees- 1, 2 and 3 (9)
Shrubs- 5, 7, 9, 10 to 15, 17, 18 (103 plants)
Groundcover- 19 (162 sq. ft.)
Remainder of back yard in turf

Option 2 - BED A & B - Medium Cost

Pool deck, perimeter, and right side yard plants

Plant ID Number and total plants
Trees- 1-4 (4 trees)
Shrubs- 5-7, 9, 10-16 (120 plants)
Groundcover- 19 (290 sq. ft.)
Remainder of back yard in turf

Option 3 - BED A, B & C- Highest Cost

Pool deck, perimeter, and right and left side yard plants

Plant ID Number and total plants
Trees- 1 through 4 (4)
Shrubs- 5-19 (128 plants)
Groundcover- 14-17 (430 sq. ft.)
Turf: 831 sq. ft.

Site Dimensions
Overall Site: 12,144 sq. ft. (.28 acres)
Back Yard without pool: 3,472 sq. ft.
Back Yard: Depth- 56 ft., Width-92 ft.
Side Yards: Width- 20 and 25 ft.
Tree canopy coverage: 1,783 sq. ft.
Pool deck: 1,680 sq. ft.
House: 1,720 sq. ft.

Plant Totals
of species: 19
of trees and shrubs: 132
Groundcover: 430 sq. ft.
Back yard turf: 831 sq. ft.

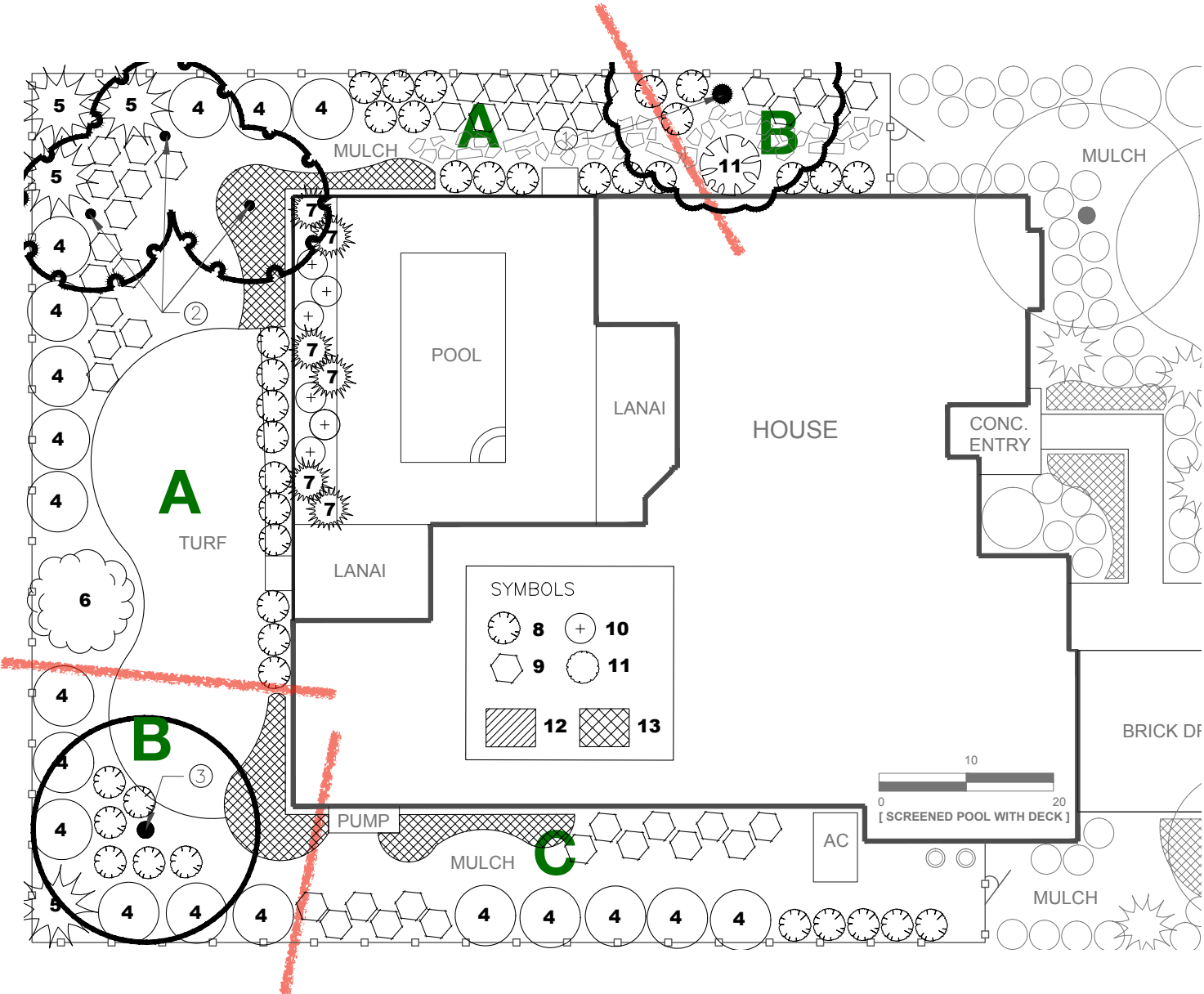
Plant Schedules

Back Yard Open Pool with Deck

Plan 6

PLANT SCHEDULE FOR PLANTING PLAN #6: BACKYARD OPEN POOL WITH DECK - ZONES 9A-9B				
	SUN PLANTS (plus one alternative)		SHADE PLANTS	
NO.	BOTANICAL	COMMON NAME	BOTANICAL	COMMON NAME
	TREES			
1	Ilex x attenuata 'East Palatka'	East Palatka Holly	NA	
	Acacia farnesiana	Sweet Acacia		
2	Eugenia foetida	Spanish Stopper	Camellia japonica	Camellia
	Osmanthus americanus	Wild Olive		
3	Sabal palmetto	Sabal or Cabbage Palm	Trachycarpus fortunei	Windmill Palm (smaller)
4	Ulmus alata	Winged Elm	NA	
	Ulmus americana	Amerian Elm		
	SHRUBS			
5	Chamaerops humilis	European Fan Palm	Rhapidophyllum hystrix	Needle Palm
	Serenoa repens	Saw Palmetto		
6	Fatsia japonica	Fatsia (evergreen)	Philodendron bipinnatifidum	Philodendron Selloum
	Rosmarinus officinalis	Rosemary		
7	Buddleja davidii	Butterfly Bush	Clethra alnifolia	Sweet Pepperbush
	Odontonema strictum	Firespike		
8	Ilex cornuta 'nana'	Dwarf Burford Holly	Viburnum suspensum	Sandankwa Viburnum
	Lyonia ferruginea	Rusty Lyonia		
9	Loropetalum chinense	Chinese Fringe Bush	Illicium floridanum	Florida Anise
	Hibiscus rosa-sinensis	Chinese Hibiscus		
10	Myrica cerifera	Wax Myrtle	Strelitzia nicolai	Giant Bird of Paradise
	Ilex vomitoria	Yaupon Holly		
11	Gamolepsis chrysanthemoides	African Bush Daisy	Neoregelia spp.	Bromeliad
	Ilex vomitoria 'Stokes Dwarf'	Dwarf Yaupon Holly		
12	Rhododendrun Indicum	Formosa Azalea	Gardenia jasminoides	Gardenia
	Acca sellowiana	Pineapple Guava		
13	Lantana depressa	Pineland Lantana	Dryopteris erythosora	Autumn Fern
	Russelia sarmentosa	Firecracker Plant		
14	Viburnum obovatum 'Densa'	Dwarf Walters Viburnum	Gardenia jasminoides 'Radicans'	Dwarf Gardenia
	Rosmarinus spp.	Rosemary		
15	Yucca filamentosa	Adam's Needle	Zamia pumila	Coontie
	Aloe saponaria or vera	Soap Aloe or Medicinal Aloe		
16	Zamia pumila	Coontie	Dryopteris erythosora	Autumn Fern
	Eragrostis spectabilis	Purple Lovegrass		
	GRASSES, GROUND COVERS, PERENNIALS			
17	Agapanthus africanus	Lily of the Nile	Aspidistra elatior 'Milky Way'	Milky Way Aspidistra
	Tulbaghia vilacea	Society Garlic		
18	Canna x generalis	Canna Lily	Caladium spp.	Caladiums
	Crinum asiaticum	Grand Crinum Lily		
19	Liriope muscari 'Evergreen Giant'	Evergreen Giant Liriope	Cyrtomium falcatum	Holly Fern
	Tripsacum floridana	Florida Gama Grass		
20	Tripsacum dactyloides	Fakahatchee Grass	no large shade loving grasses	
	Spartina bakeri	Sand Cordgrass		

PLANT SCHEDULE FOR PLANTING PLAN #6: BACKYARD OPEN POOL WITH DECK - ZONES 10A-10B				
	SUN PLANTS (plus one alternative)		SHADE PLANTS	
NO.	BOTANICAL	COMMON NAME	BOTANICAL	COMMON NAME
	TREES			
1	Tabebuia heterophylla	Pink Trumpet Tree	NA	
	Acacia farnesiana	Sweet Acacia		
2	Eugenia foetida	Spanish Stopper	Capparis cynophallophora	Jamaica Caper Tree
	Citharexylum spinosum	Fiddlewood		
3	Sabal palmetto	Sabal or Cabbage Palm	Trachycarpus fortunei	Windmill Palm (smaller)
	Psuedophoenix sargentii	Sargents Palm		
4	Coccoloba divresifolia	Pigeonplum	NA	
	Podocarpus gracilior	Weeping Podocarpus		
	SHRUBS			
5	Chamaerops humilis	European Fan Palm	Rhapidophyllum hystrix	Needle Palm
	Serenoa repens	Saw Palmetto		
6	Fatsia japonica	Fatsia (evergreen)	Philodendron bipinnatifidum	Philodendron Selloum
	Rosmarinus officinalis	Rosemary		
7	Acalypha hispida	Chenille Plant	Codiaeum variegatum	Croton
	Odontonema strictum	Firespike		
8	Chrysobalanus icaco	Cocoplum	Viburnum suspensum	Sandankwa Viburnum
	Lyonia ferruginea	Rusty Lyonia		
9	Galphimia glauca	Thryallis	Psychotria nervosa	Wild Coffee
	Hibiscus rosa-sinensis	Chinese Hibiscus		
10	Myrica cerifera	Wax Myrtle	Strelitzia nicolai	Giant Bird of Paradise
	Ilex vometoria	Yaupon Holly		
11	Gamolepsis chrysanthemoides	African Bush Daisy	Neoregelia spp.	Bromeliad
	Scaevola plumeri	Inkberry		
12	Ixora coccinea	Ixora	Gardenia jasminoides	Gardenia
	Acalypha hispida	Chenille Plant		
13	Lantana depressa	Pineland Lantana	Dryopteris erythosora	Autumn Fern
	Russelia sarmentosa	Firecracker Plant		
14	Viburnum obovatum 'Densa'	Dwarf Walters Viburnum	Gardenia augusta "Radicans'	Dwarf Gardenia
	Rosmarinus spp.	Rosemary		
15	Yucca filamentosa	Adam's Needle	Zamia pumila	Coontie
	Aloe saponaria or vera	Soap Aloe or Medicinal Aloe		
16	Zamia pumila	Coontie	Dryopteris erythosora	Autumn Fern
	Eragrostis spectabilis	Purple Lovegrass		
	GRASSES, GROUND COVERS, PERENNIALS			
17	Ernodea littoralis	Golden Creeper	Aspidistra elatior 'Milky Way'	Milky Way Aspidistra
	Glandularia tampensis	Tampa Vervain		
18	Strelitzia reginae	Bird of Paradise	Caladium spp.	Caladiums
	Crinum asiaticum	Grand Crinum Lily		
19	Lantana montividenis	Trailing Lantana	Cyrtomium falcatum	Holly Fern
	Tripsacum floridana	Florida Gama Grass		
20	Tripsacum dactyloides	Fakahatchee Grass	no large shade loving grasses	
	Cymbopogon citratus	Lemon Grass		



Plan Options

Option 1 - BED A- Lowest Cost
Perimeter and pool planter

Plant ID Number and total plants
Trees- 2 (3 trees)
Shrubs- 4-10 (68 plants)
Groundcover- 12 (178 sq. ft.)
Remainder of back yard in turf

Option 2 - BED A & B - Medium Cost
Perimeter, pool planter, lot corner, and side yard

Plant ID Number and total plants
Trees- 1-3 (5 trees)
Shrubs- 5 -12 (93 plants)
Groundcover- 12 (292 sq. ft.)
Remainder of back yard in turf

Option 3 - BED A, B & C- Highest Cost
Perimeter of back yard, pool planter, and side yards

Plant ID Number and total plants
Trees- 1-3 (5)
Shrubs- 4-12 (117 plants)
Groundcover- 12 (362 sq. ft.)
Turf: 685 sq. ft.

Site Dimensions
Overall Site: 14,810 sq. ft. (.34 acres)
Back Yard without pool: 3,100 sq. ft.
Back Yard: Depth- 30 ft., Width-95 ft.
Side Yards: Width- 14 ft. and 15 ft.
Tree canopy coverage: 1,665
Screened pool and planter: 1,300 sq. ft.
House: 4,000 sq. ft.

Plant Totals
of species: 12
of trees and shrubs: 122
Groundcover: 362 sq. ft.
Back yard turf: 685 sq. ft.

Plant Schedules

Back Yard with Screened Pool

Plan 7

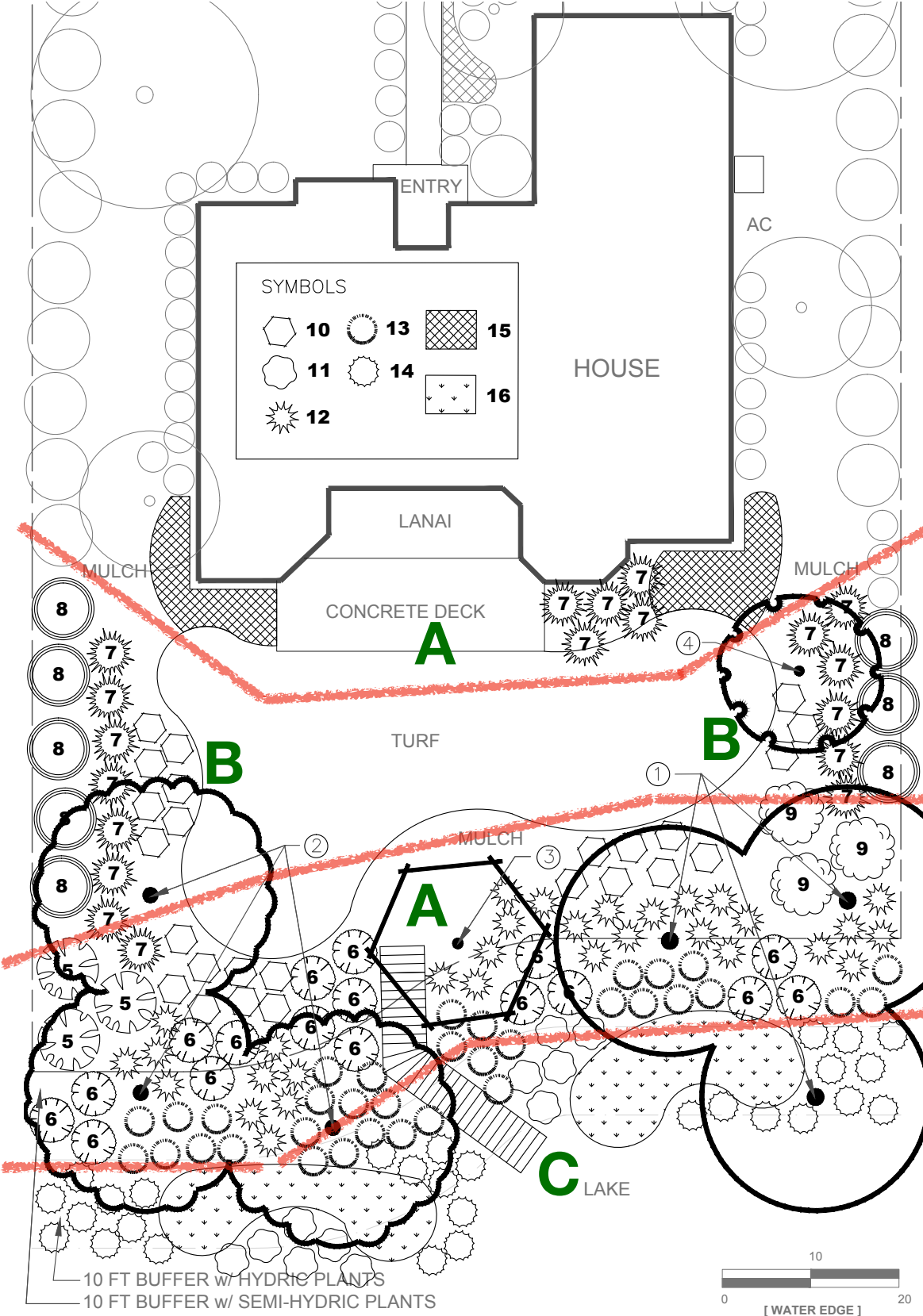
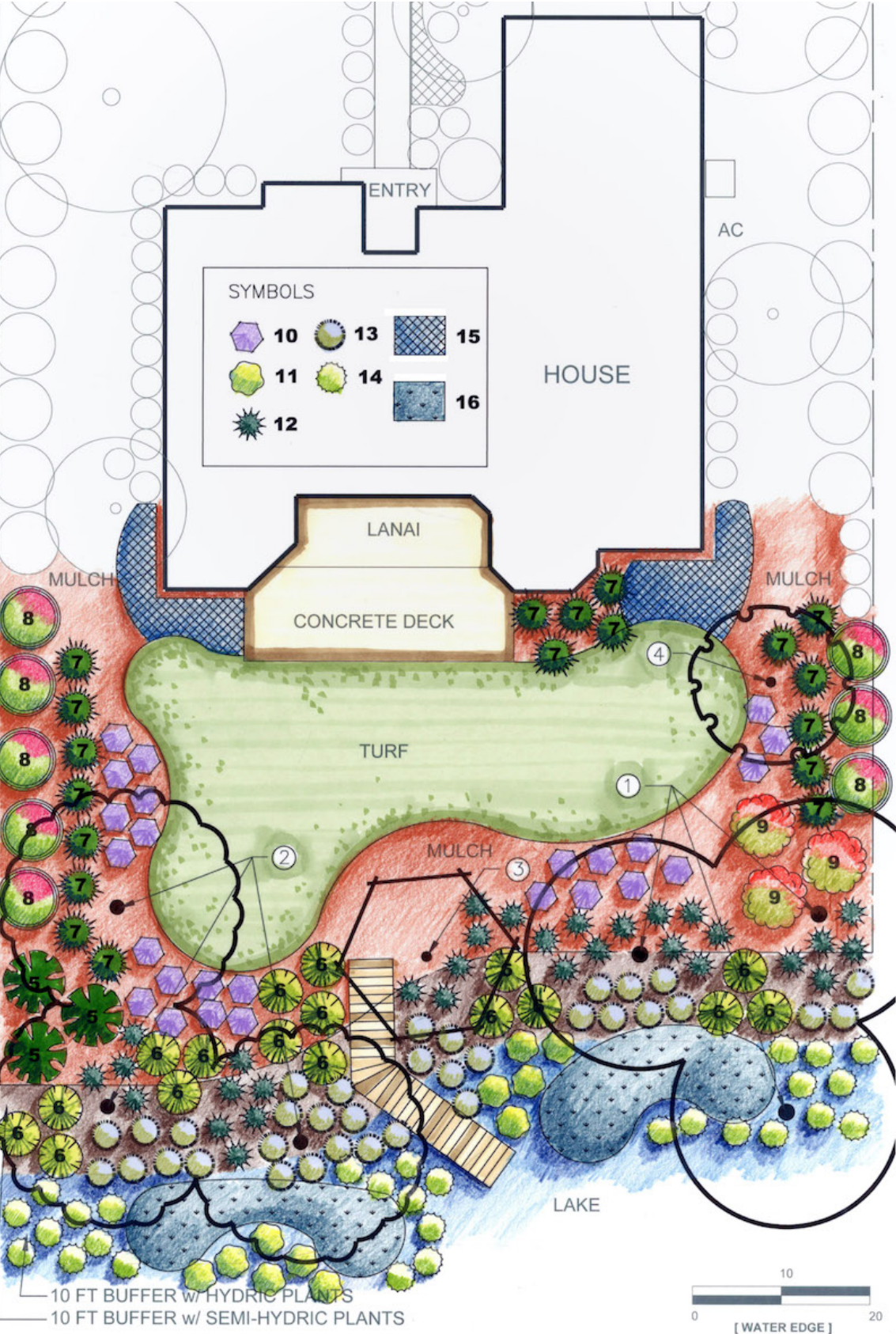
PLANT SCHEDULE FOR PLANTING PLAN #7: BACKYARD WITH SCREENED POOL - ZONES 9A - 9B				
	SUN PLANTS (plus one alternative)		SHADE PLANTS	
NO.	BOTANICAL	COMMON NAME	BOTANICAL	COMMON NAME
	TREES			
1	Cercis canadensis	Eastern Redbud	Ilex cassine	Dahoon Holly
	Chionanthus virginicus	Fringetree		
2	Sabal palmetto	Cabbage Palm	Trachycarpus fortunei	Windmill Palm
	Livistona spp.	Chinese Fan Palm		
3	Cornus florida	Flowering Dogwood	Camellia sasanqua	Sasanqua Camellia
	Chionanthus virginicus	Fringetree		
	SHRUBS			
4	Pittosporum tobira cvs.	Pittosporum	Mahonia fortunei	Holly Grape
	Forestiera segregata	Florida Privet		
5	Sabal etonia	Scrub Palmetto	Rhapidophyllum hystrix	Needle Palm
	Philodendron bipinnatifidum	Selloum		
6	Myrica cerifera	Wax Myrtle	Ilex vomitoria	Yaupon Holly
	Ilex vometoria 'Pendula'	Weeping Yaupon Holly		
7	Dianella spp.	Flax Lily	Hedychium spp.	Butterfly Lily
	Belamcanda chinensis	Blackberry Lily		
8	Zamia floridana	Coontie	Dryopteris spp.	Autumn Fern
	Acrostichum danaeifolium	Leather Fern		
9	Muhlenbergia capillaris	Muhly Grass	Agapanthus praecox ssp. orientalis	Agapanthus
	Aristida stricta var. beyrichiana	Wiregrass		
10	Cyrtomium falcatum	Holly Fern	Dryopteris spp.	Autumn Fern
	Anthericum sanderi	St. Bernard's Lily		
11	Russelia sarmentosa	Firecracker Plant	Spiraea spp.	Bridal Wreath
	Rosa spp.	Rose		
	GRASSES, GROUND COVERS, PERENNIALS			
12	Juniperus conferta	Shore Juniper	Ophiopogon japonicus	Mondo Grass
	Juniperus horizontalis	Creeping Juniper		

PLANT SCHEDULE FOR PLANTING PLAN #7: BACKYARD WITH SCREENED POOL - ZONES 10A - 10B				
	SUN PLANTS (plus one alternative)		SHADE PLANTS	
NO.	BOTANICAL	COMMON NAME	BOTANICAL	COMMON NAME
	TREES			
1	Lagerstroemia indica	Crepe Myrtle	Ilex cassine	Dahoon Holly
	Tabebuia chrysotricha	Yellow Trumpet Tree		
2	Sabal palmetto	Cabbage Palm	Trachycarpus fortunei	Windmill Palm
	Livistona spp.	Chinese Fan Palm		
3	Tabebuia heterophylla	Pink Trumpet Tree	NA	
	Ilex rotunda	Round Holly		
	SHRUBS			
4	Schefflera arboricola	Dwarf Schefflera	Vibrunum obovatum 'Mrs. Shiller's Delight'	Dwarf Walter's Viburnum
	Myrcianthes fragrans	Simpson's Stopper		
5	Sabal minor	Dwarf Palmetto	Rhapidophyllum hystrix	Needle Palm
	Philodendron bipinnatifidum	Selloum		
6	Myrica cerifera	Wax Myrtle	Ilex vomitoria	Yaupon Holly
	Ilex vometoria 'Pendula'	Weeping Yaupon Holly		
7	Dianella spp.	Flax Lily	Hedychium spp.	Butterfly Lily
	Dietes iridioides	African Iris		
8	Zamia floridana	Coontie	Dryopteris spp.	Autumn Fern
	Acrostichum danaeifolium	Leather Fern		
9	Muhlenbergia capillaris	Muhly Grass	Dietes Iridioides	African Iris
	Aristida stricta var. beyrichiana	Wiregrass		
10	Cyrtomium falcatum	Holly Fern	Aspidistra elatior	Cast Iron Plant
	Alpinia zerumbet 'Variegata'	Varigated Shell Flower		
11	Russelia sarmentosa	Firecracker Plant	Spiraea spp.	Bridal Wreath
	Pteridium aquilinum	Bracken Fern		
	GRASSES, GROUND COVERS, PERENNIALS			
12	Juniperus conferta 'Blue Pacific'	Shore Juniper	Ophiopogon japonicus	Mondo Grass
	Juniperus horizontalis	Creeping Juniper		

Planting Plans

Back Yard with Stormwater Pond Shoreline

Plan 8



Plan Options

Option 1 - BED A- Lowest Cost
Foundation plants and shoreline buffer

Plant ID Number and total plants
Trees- 1, 2 and 3 (4)
Shrubs- 5, 6, 7, 9, 10, 12, 13 (100 plants)
Groundcover- 15 (228 sq. ft.)
Remainder of back yard in turf

Option 2 - BED A & B - Medium Cost
Foundation plants, shoreline buffer and perimeter plants

Plant ID Number and total plants
Trees- 1-4 (6 trees)
Shrubs- 5, 6, 7, 9, 10, 12, 13 (122 plants)
Groundcover- 15 (228 sq. ft.)

Option 3 - BED A, B & C- Highest Cost
Foundation and perimeter plants, shoreline buffer and hydric plants

Plant ID Number and total plants
Trees- 1-4 (8)
Shrubs- 5-14 (169 plants)
Groundcover- 15, 16 (674 sq. ft.)
Turf: 1,597 sq. ft.

Site Dimensions
Overall Site: 15,681 sq. ft. (.36 acres)
Back Yard: 5,152 sq. ft.
Back Yard: Depth- 56 ft., Width-92 ft.
Side Yards: Width- 20 and 25 ft.
Tree canopy coverage: 4,279 sq. ft.
House: 2,700 sq. ft.

Plant Totals
of species: 16
of trees and shrubs: 169
Groundcover: 674 sq. ft.
Back yard turf: 1,597 sq. ft.

Plant Schedules

Back Yard with Stormwater Pond Shoreline

Plan 8

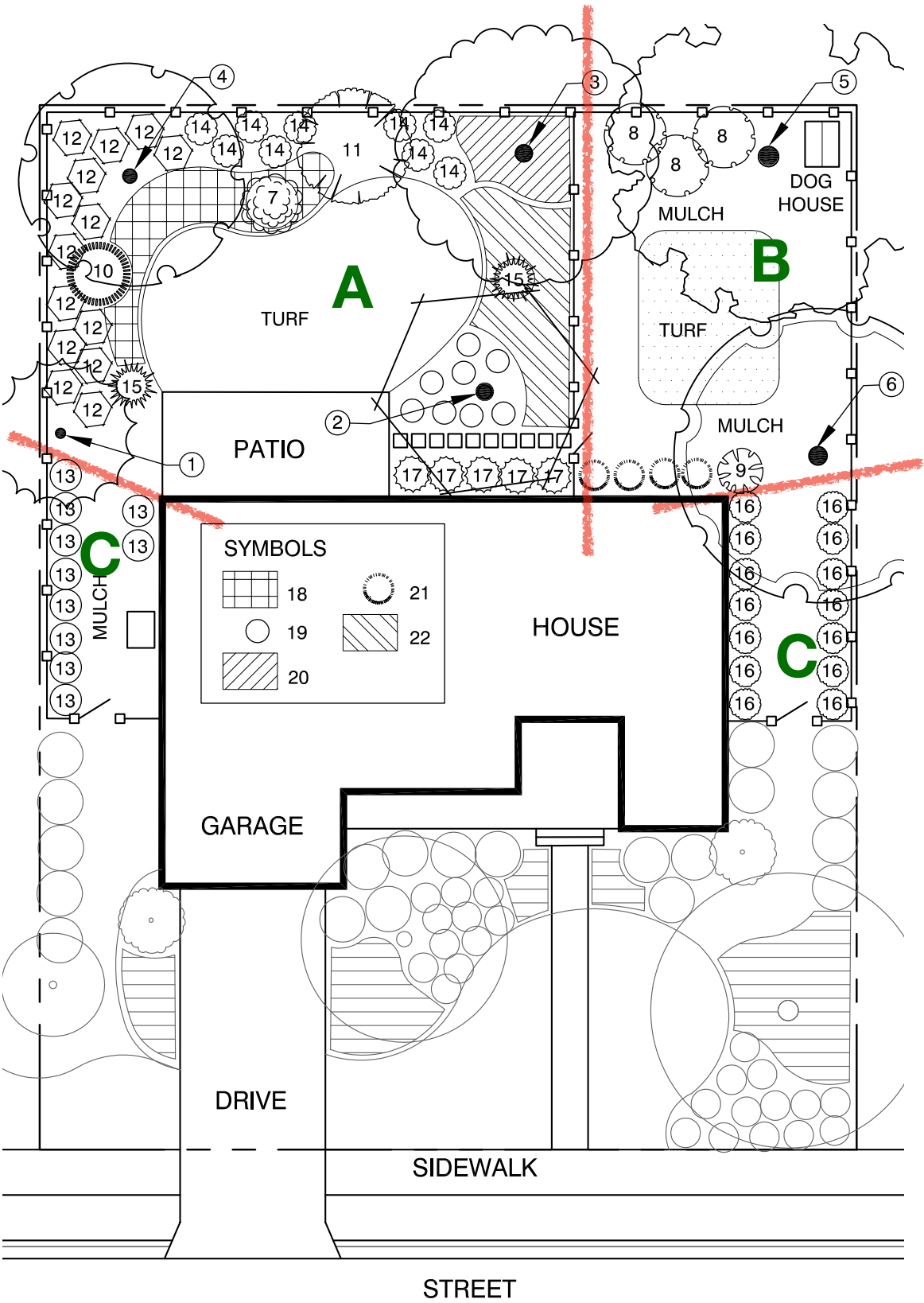
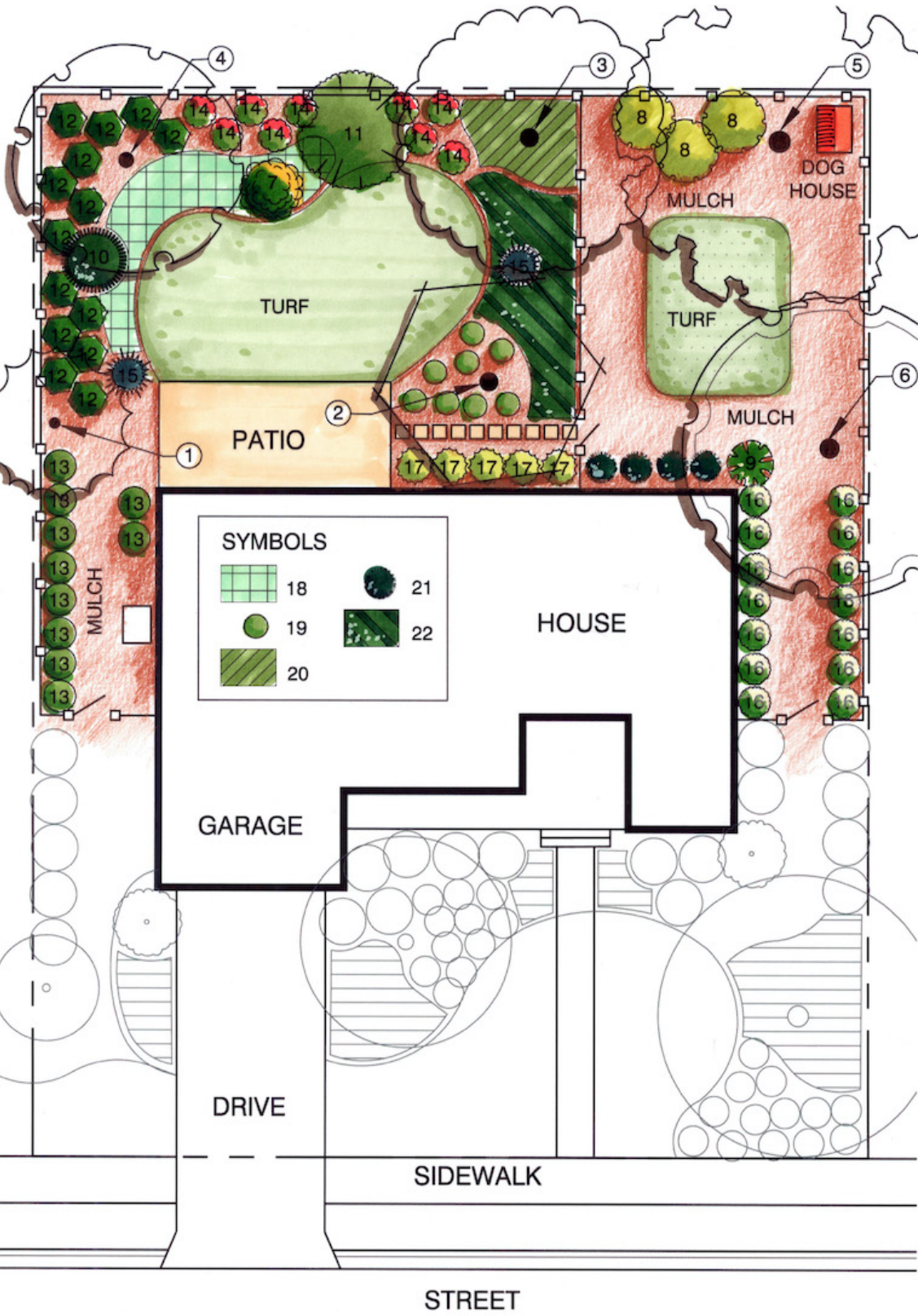
PLANT SCHEDULE FOR PLANTING PLAN #8: BACK YARD WITH POND SHORELINE- ZONES 9A - 9B				
	SUN PLANTS (plus one alternative)		SHADE PLANTS	
NO.	BOTANICAL	COMMON NAME	BOTANICAL	COMMON NAME
	TREES			
1	Taxodium spp.	Pond Cypress	Fraxinus pennsylvanica	Green Ash
	Betula nigra	River Birch		
2	Acer rubrum	Red Maple	Fraxinus caroliniana	Water Ash
	Acer barbatum	Florida Maple		
3	Persea palustris	Swamp Bay	Cornus foemina	Swamp Dogwood
	Ilex opaca	American Holly		
4	Camellia sasanqua	Sasanqua Camellia	Chionanthus virginicus	Fringetree
	Magnolia Xsoulangiana	Saucer Magnolia		
	SHRUBS			
5	Rhapidophyllum hystrix	Needle Palm	Rhapis excelsa	Lady Palm
	Sabal Minor	Dwarf Palmetto		
6	Muhlenbergia capillaris	Muhly Grass	Dietes iridioides	African Iris
	Spartina spp.	Cordgrass		
7	Zamia floridana	Coontie	Nephrolepis exaltata	Sword Fern
	Zamia furfuracea	Cardboard Plant		
8	Callicarpa americana	Beautyberry	Gardenia jasminoides	Gardenia
	Myrcianthes fragrans	Simpson's Stopper		
9	Itea virginica	Virginia Willow	Schefflera arboricola	Dwarf Schefflera
	Hamelia patens	Firebush		
10	Eragrostis elliottii	Elliott's Lovegrass	Cyrtomium falcatum	Holly Fern
	Eragrostis spectabilis	Purple Lovegrass		
11	Nymphaea mexicana	Yellow Water Lily	NA	
	Nymphaea odorata	Fragrant Water Lily		
12	Eleocharis celloso	Spikerush	NA	
	Iris spp.	Iris		
13	Pontederia cordata	Pickerelweed	NA	
	Sagittaria graminea	Duckpotato		
14	Nymphoides aquatica	Banana Lily	NA	
	Sagittaria filiformis	Variable Leaf Arrowhead		
	GRASSES, GROUND COVERS, PERENNIALS			
15	Liriope muscari	Liriope	Ophiopogon japonicus	Mondo Grass
	Schizachyrium scoparium	Little Blue Stem Grass		
16	Nuphar advena	Splatter-dock	NA	
	Nelumbo lutea	American Lotus		

PLANT SCHEDULE FOR PLANTING PLAN #8: BACK YARD WITH POND SHORELINE - ZONES 10A - 10B				
	SUN PLANTS (plus one alternative)		SHADE PLANTS	
NO.	BOTANICAL	COMMON NAME	BOTANICAL	COMMON NAME
	TREES			
1	Taxodium Distichum	Bald Cypress	Ilex cassine	Dahoon Holly
	Magnolia virginiana	Swamp Magnolia		
2	Ilex rotunda	Round Holly	Ilex opaca	American Holly
	Persea palustris	Swamp Bay		
3	Callestemon spp.	Bottlebrush	Magnolia figo	Bananshrub
	Lagerstroemia indica	Crepe Myrtle		
4	Myrcianthes fragrans	Simpson's Stopper	Cornus foemina	Swamp Dogwood
	Myrica cerifera	Wax Myrtle		
	SHRUBS			
5	Rhapidophyllum hystrix	Needle Palm	Rhapis excelsa	Lady Palm
	Sabal Minor	Dwarf Palmetto		
6	Muhlenbergia capillaris	Muhly Grass	Tripsacum floridana	Florida Gama Grass
	Spartina spp.	Cordgrass		
7	Zamia floridana	Coontie	Nephrolepis exaltata	Sword Fern
	Acrostichum danaeifolium	Leather Fern		
8	Callicarpa americana	Beautyberry	Gardenia jasminoides	Gardenia
	Myrcianthes fragrans	Simpson's Stopper		
9	Hamelia patens	Firebush	Schefflera arboricola	Dwarf Schefflera
	Jasminum multiflorum	Downy Jasmine		
10	Eragrostis elliottii	Elliott's Lovegrass	Cyrtomium falcatum	Holly Fern
	Eragrostis spectabilis	Purple Lovegrass		
11	Nymphaea mexicana	Yellow Water Lily	NA	
	Nymphaea odorata	Fragrant Water Lily		
12	Eleocharis celloso	Spikerush	NA	
	Dietes spp.	Iris		
13	Pontederia cordata	Pickerelweed	NA	
	Sagittaria graminea	Duckpotato		
14	Canna flacida	Golden Canna	NA	
	Sagittaria filiformis	Variable Leaf Arrowhead		
	GRASSES, GROUND COVERS, PERENNIALS			
15	Scaevola plumieri	Inkberry	Aspidistra elatior	Cast Iron Plant
	Tripsacum floridana	Florida Gamma Grass		
16	Nuphar advena	Splatter-dock	NA	
	Nelumbo lutea	American Lotus		

Planting Plans

Back Yard with Dog Run

Plan 9



Plan Options

Option 1 - BED A- Lowest Cost
Foundation and perimeter plants

Plant ID Number and total plants
Trees- 1 through 4 (4)
Shrubs- 7, 10, 11, 12, 14, 15, 17,19 (41 plants)
Groundcover- 18, 20, 22 (447 sq. ft.)
Turf- 670 sq. ft.
Remainder of back and side yards in turf

Option 2 - BED A & B - Medium Cost
Foundation, perimeter and dog run plants

Plant ID Number and total plants
Trees- 1 through 6 (6 trees)
Shrubs- 7-12, 14, 15, 17, 19, 21 (49 plants)
Groundcover- 18, 20, 22 (447 sq. ft.)
Turf- 907 sq. ft.
Remainder of back and side yards in turf

Option 3 - BED A, B & C- Highest Cost
Foundation, perimeter, dog run and side yard plants

Plant ID Number and total plants
Trees- 1 through 6 (6 trees)
Shrubs- 7-17, 19, 21 (73 plants)
Groundcover- 18, 20, 22 (447 sq. ft.)
Turf: 970 sq. ft.

Site Dimensions
Overall Site: 10,400 sq. ft. (.24 acres)
Back Yard: 3,960 sq. ft.
Back Yard: Depth- 44 ft., Width-90 ft.
Tree canopy coverage: 3,151 sq. ft.
Side Yards: Width- 15 ft.
House: 2,160 sq. ft.

Plant Totals
of species: 22
of trees and shrubs: 73
Groundcover: 447 sq. ft.
Back yard turf: 907 sq. ft.

Plant Schedules

Back Yard with Dog Run

Plan 9

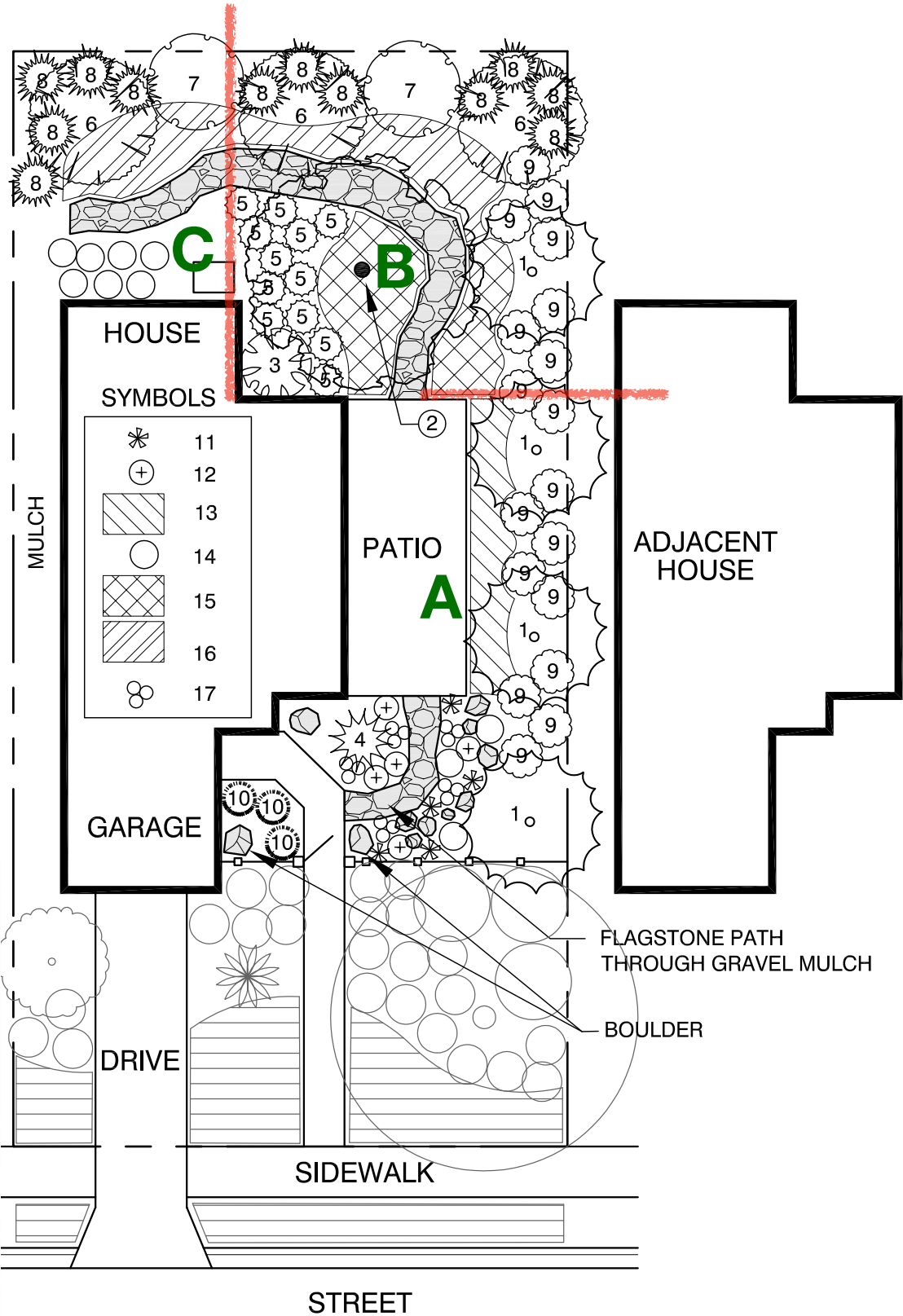
PLANT SCHEDULE FOR PLANTING PLAN #9: BACK YARD WITH DOG RUN- ZONES 9A-9B				
	SUN PLANTS (plus one alternative)		SHADE PLANTS	
NO.	BOTANICAL	COMMON NAME	BOTANICAL	COMMON NAME
	TREES			
1	Callistemon citrinus	Lemon Bottlebrush	Ardisia escallonioidies	Marlberry
	Ilex x attenuata 'Savannah'	Savannah Holly		
2	Lagerstroemia indica 'Natchez'	Natchez Crape Myrtle	Styrax americana	American Snowbell
	Vitex agnus-castus	Chase Tree		
3	Magnolia grandiflora	Southern Magnolia	NA	
	Magnolia grandiflora 'Little Gem'	Little Gem Magnolia		
4	Acer rubrum	Red Maple	NA	
	Elaeocarpus decipiens	Japanese Blueberry		
5	Quercus virginiana	Live Oak	NA	
	Quercus alba	White Oak		
6	Ulmus alata	Winged Elm	NA	
	Ulmus americana	American Elm		
	SHRUBS			
7	Calicarpa americana	Beauty Berry	Rhododendron austrinum	Flame Azalea
	Hamelia patens	Firebush		
8	Camelia sasanqua	Sasanqua Camelia	Rhodendron indica	Formosa Azalea
	Lyonia ferruginea	Rusty Lyonia		
9	Fatsia japonica	Fatsia (evergreen)	Clethra alnifolia	Sweet Pepperbush
	Buddleja davidii	Butterfly Bush		
10	Chamaerops humilis	European Fan Palm	Philodendron bipinnatifidum	Philodendron Selloum
	Malvaviscus arboreus	Turk's Cap		
11	Ilex vomitoria	Yaupon Holly	Rhapidophyllum histrix	Needle Palm
	Myrica cerifera	Wax Myrtle		
12	Ilex vomitoria 'Stokes Dwarf'	Dwarf Yaupon Holly	Gardenia jasminoides 'Radicans'	Dwarf Gardenia
	Lantana depressa	Pineland Lantana		
13	Gamolepsis chrysanthemoides	African Bush Daisy	Cyrtomium falcatum	Holly Fern
	Rosmarinus spp.	Rosemary		
14	Rhododendron 'Encore'	Encore Azalea	Mahonia fortunei	Fortune's Mahonia
	Rosa 'Knockout'	Knockout Rose		
15	Sabal minor	Blue-stem Palmetto	Zamia pumila	Coontie
	Sereno repens	Saw Palmetto		
16	Viburnum obovatum 'Densa'	Dwarf Walters Viburnum	Rhododendron 'Red Ruffles'	Red Ruffles Azalea
	Loropetalum chinense 'firedance'	Dwarf Loropetalum		
17	Zamia pumila	Coontie	Dryopteris erythosora	Autumn Fern
	Yucca filamentosa	Adam's Needle		
	GRASSES, GROUND COVERS, PERENNIALS			
18	Agapanthus africanus	Lily of the Nile	Zamia pumila	Coontie
	Dianella tasmanica 'variegata'	Variegated Flax Lily		
19	Aloe vera or saponaria	Aloe or Soap Aloe	Evolvulus glomeratus	Blue Daze
	Hemerocallis spp.	Daylily		
20	Aspidistra elatior	Cast Iron Plant	Kaempferia spp.	Peacock Ginger
	Juniperus chinensis 'Parsonii'	Parson's Juniper		
21	Dietes bicolor	Yellow African Iris	Aspidistra elatior 'Milky Way'	Milky Way Aspidistra
	Dietes vegeta	White African Iris		
22	Liriope muscari 'Evergreen Giant'	Liriope Evergreen Giant	Ophiopogon japonicus	Mondo Grass
	Tulbaghia vilacea	Society Garlic		

PLANT SCHEDULE FOR PLANTING PLAN #9: BACKYARD WITH DOG RUN- ZONES 10A-10B				
	SUN PLANTS (plus one alternative)		SHADE PLANTS	
NO.	BOTANICAL	COMMON NAME	BOTANICAL	COMMON NAME
	TREES			
1	Callistemon citrinus	Lemon Bottlebrush	Ardisia escallonioidies	Marlberry
	Tabebuia heterophylla	Pink Trumpet Tree		
2	Lagerstroemia indica 'Natchez'	Natchez Crape Myrtle	Styrax americana	American Snowbell
	Acacia farnesiana	Sweet Acacia		
3	Chorisia speciosa	Floss-silk Tree	NA	
	Persea americana	Avacado		
4	Coccoloba diversifolia	Pigeonplum	NA	
	Podocarpus gracilior	Weeping Podocarpus		
5	Quercus virginiana	Live Oak	NA	
	Jacaranda mimosifolia	Jacaranda		
6	Sideroxylon Salicifolium	Buckthorn	NA	
	Elaeocarpus decipiens	Japanese Blueberry		
	SHRUBS			
7	Calicarpa americana	Beauty Berry	Brunfelsia grandiflora	Yesterday-Today-and-Tomorrow
	Hamelia patens	Firebush		
8	Codiaeum variegatum	Croton	Psychotria nervosa	Wild Coffee
	Lyonia ferruginea	Rusty Lyonia		
9	Fatsia japonica	Fatsia (evergreen)	Thunbergia erecta	King's Mantle
	Jasminum multiflorum	Downy Jasmine		
10	Chamaerops humilis	European Fan Palm	Philodendron bipinnatifidum	Philodendron Selloum
	Malvaviscus arboreus	Turk's Cap		
11	Ilex vometoria	Yaupon Holly	Rhapidophyllum histrix	Needle Palm
	Myrica cerifera	Wax Myrtle		
12	Ilex vometoria 'Stokes Dwarf'	Dwarf Yaupon Holly	Gardenia augusta "Radicans'	Dwarf Gardenia
	Lantana depressa	Pineland Lantana		
13	Gamolepsis chrysanthemoides	African Bush Daisy	Cyrtomium falcatum	Holly Fern
	Rosmarinus spp.	Rosemary		
14	Ixora coccinea	Ixora	Strelitzia reginae	Bird of Paradise
	Rosa 'Knockout'	Knockout Rose		
15	Sabal minor	Blue-stem Palmetto	Zamia pumila	Coontie
	Sereno repens	Saw Palmetto		
16	Viburnum obovatum 'Densa'	Dwarf Walters Viburnum	Crossandra spp.	Firecracker Flower
	Russelia equisetiformis	Firecracker Plant		
17	Zamia pumila	Coontie	Dryopteris erythosora	Autumn Fern
	Yucca filamentosa	Adam's Needle		
	GRASSES, GROUND COVERS, PERENNIALS			
18	Agapanthus africanus	Lily of the Nile	Zamia pumila	Coontie
	Dianella tasmanica 'variegata'	Variegated Flax Lily		
19	Aloe vera or saponaria	Aloe or Soap Aloe	Evolvulus glomeratus	Blue Daze
	Hemerocallis spp.	Daylily		
20	Aspidistra elatior	Cast Iron Plant	Kaempferia spp.	Peacock Ginger
	Scaevola plumieri	Inkberry		
21	Dietes bicolor	Yellow African Iris	Aspidistra elatior 'Milky Way'	Milky Way Aspidistra
	Dietes vegeta	White African Iris		
22	Glandularia tampensis	Tampa Vervain	Ophiopogon japonicus	Mondo Grass
	Tulbaghia vilacea	Society Garlic		

Planting Plans

Back Yard and Side Yard Patio

Plan 10



Plan Options

Option 1 - BED A- Lowest Cost
Foundation and perimeter plants

Plant ID Number and total plants
Trees- 1 (3 trees)
Shrubs- 4, 9, 10, 11, 12, 14, 17 (30 plants)
Groundcover- 13 (112 sq. ft.)
Remainder of back yard in turf

Option 2 - BED A & B - Medium Cost
Foundation, perimeter and dog run plants

Plant ID Number and total plants
Trees- 1 and 2 (4 trees)
Shrubs- 3 through 12, 14, 17 (61 plants)
Groundcover- 13, 15, 16 (527 sq. ft.)
Remainder of back and side yards in turf

Option 3 - BED A, B & C- Highest Cost
Foundation, perimeter, dog run and side yard plants

Plant ID Number and total plants
Trees- 1 and 2 (4 trees)
Shrubs- 3 through 12, 14, 17 (74 plants)
Groundcover- 13, 15, 16 (624 sq. ft.)
Turf: none

Site Dimensions
Overall Site: 5,900 sq. ft. (.14 acres)
Back and Side Yard: 2,353 sq. ft.
Back Yard: Depth- 25-35 ft., Width-55 ft.
Side Yards: Width- 22 ft. and 5 ft.
Tree canopy coverage: 1,363 sq. ft.
House: 1,280 sq. ft.

Plant Totals
of species: 17
of trees and shrubs: 178
Groundcover: 624 sq. ft.

Plant Schedules

Back Yard and Side Yard Patio

Plan 10

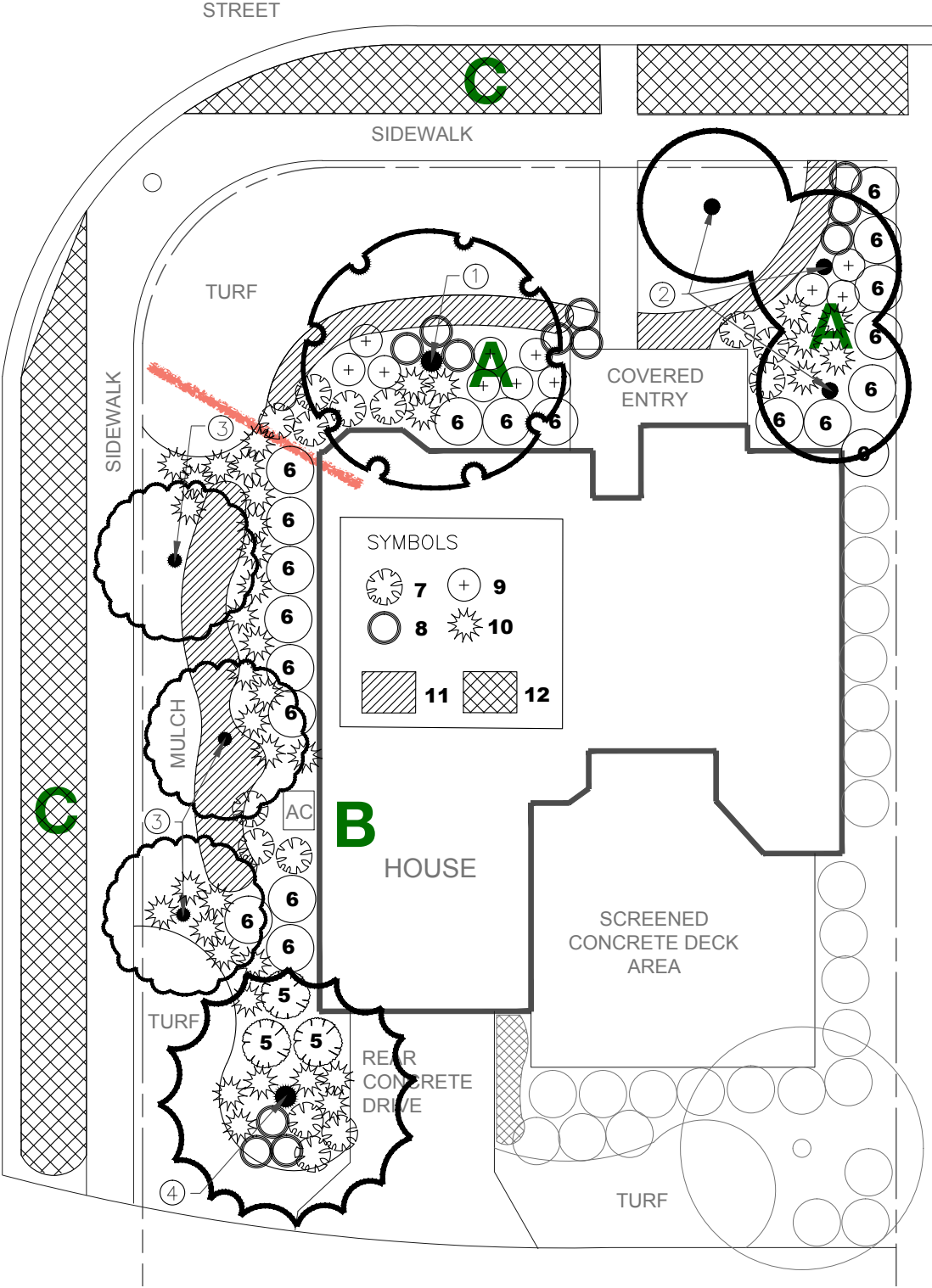
PLANT SCHEDULE FOR PLANTING PLAN #10: BACK YARD AND SIDE YARD PATIO - ZONES 9A-9B				
	SUN PLANTS (plus one alternative)		SHADE PLANTS	
NO.	BOTANICAL	COMMON NAME	BOTANICAL	COMMON NAME
	TREES			
1	Ilex x attenuata 'Savannah'	Savannah Holly	Camellia japonica	Camellia
	Cordia boissieri	White Geiger		
2	Acer rubrum	Red Maple	NA	
	Olea europaea	Olive		
	SHRUBS			
3	Chamaedorea microspadix	Bamboo Palm	Rhapidophyllum hystrix	Needle Palm
	Bambusa multiplex 'Riviereorum'	Chinese Goddess Bamboo		
4	Dioon edule	Mexican Cycad	Sabal Minor	Blue-stem Palmetto
	Chamaerops humilis	European Fan Palm		
5	Gardenia jasminoides 'Radicans'	Dwarf Gardenia	Rhododendron 'Red Ruffles'	Red Ruffles Azalea
	Viburnum obovatum 'Densa'	Dwarf Walters Viburnum		
6	Ilex vomitoria	Yaupon Holly	Strelitzia nicolai	Giant Bird of Paradise
	Myrica cerifera	Wax Myrtle		
7	Illicium parviflorum	Yellow Anise	Illicium floridanum	Florida Anise
	Lyonia ferruginea	Rusty Lyonia		
8	Sabal minor	Blue-stem Palmetto	Zamia pumila	Coontie
	Serenoa repens	Saw Palmetto		
9	Rhododendron 'Encore'	Encore Azalea	Clethra alnifolia	Summersweet
	Rosa 'Knockout'	Knockout Rose		
10	Yucca filamentosa	Adam's Needle	Aspidistra elatior	Cast Iron Plant
	Tripsacum floridana	Florida Gamma Grass		
	GRASSES, GROUND COVERS, PERENNIALS			
11	Aloe vera or saponaria	Aloe or Soap Aloe	Bromeliad spp. (shade tolerant)	Bromeliad
	Tulbaghia vilacea	Society Garlic		
12	Coreopsis lanceolata	Lanceleaf Coreopsis	Caladium x hortulanum	Caladium
	Bulbine frutescens	Bulbine		
13	Dianella tasmanica 'variegata'	Variegated Flax Lily	Liriope muscari 'Evergreen Giant'	Liriope Evergreen Giant
	Dianella tasmanica	Flax Lily		
14	Dietes iridoides	African Iris - White	Neomarica gracilis	Walking Iris
	Dietes bicolor	African Iris - Yellow		
15	Dryopteris erythrosora	Autumn Fern	Cyrtomium falcatum	Holly Fern
	Memerocallis fulva	Daylily		
16	Lantana montevidensis	Trailing Lantana	Ophiopogon japonicus	Mondo Grass
	Lantana depressa	Pineland Lantana		
17	Agapanthus africanus	Lily of the Nile	Aspidistra elatior 'Milky Way'	Milky Way Aspidistra
	Helianthus debilis	Dune Sunflower		

PLANT SCHEDULE FOR PLANTING PLAN #10: BACK YARDAND SIDE YARD PATIO - ZONES 10A-10B				
	SUN PLANTS (plus one alternative)		SHADE PLANTS	
NO.	BOTANICAL	COMMON NAME	BOTANICAL	COMMON NAME
	TREES			
1	Citharexylum spinosum	Fiddlewood	Myricanthes fragrans	Simpson's Stopper
	Cordia boissieri	White Geiger		
2	Sideroxylon Salicifolium	Buckthorn	NA	
	Olea europaea	Olive		
	SHRUBS			
3	Chamaedorea microspadix	Bamboo Palm	Rhapidophyllum hystrix	Needle Palm
	Bambusa multiplex 'Riviereorum'	Chinese Goddess Bamboo		
4	Dioon edule	Mexican Cycad	Sabal Minor	Blue-stem Palmetto
	Chamaerops humilis	European Fan Palm		
5	Gardenia augusta 'Radicans'	Dwarf Gardenia	Strelitzia reginae	Bird of Paradise
	Viburnum obovatum 'Densa'	Dwarf Walters Viburnum		
6	Ilex vometoria	Yaupon Holly	Strelitzia nicolai	Giant Bird of Paradise
	Myrica cerifera	Wax Myrtle		
7	Jatropha integerrima 'compacta'	Dwarf Peregrina	Codiaeum variegatum	Croton
	Lyonia ferruginea	Rusty Lyonia		
8	Sabal minor	Blue-stem Palmetto	Zamia pumila	Coontie
	Serenoa repens	Saw Palmetto		
9	Galphimia glauca	Thryallis	Psychotria nervosa	Wild Coffee
	Rosa 'Knockout'	Knockout Rose		
10	Yucca filamentosa	Adam's Needle	Aspidistra elatior	Cast Iron Plant
	Tripsacum floridana	Florida Gamma Grass		
	GRASSES, GROUND COVERS, PERENNIALS			
11	Aloe vera or saponaria	Aloe or Soap Aloe	Bromeliad spp. (shade tolerant)	Bromeliad
	Tulbaghia vilacea	Society Garlic		
12	Coreopsis lanceolata	Lanceleaf Coreopsis	Caladium x hortulanum	Caladium
	Bulbine frutescens	Bulbine		
13	Dianella tasmanica 'variegata'	Variegated Flax Lily	Neoregelia spp.	Bromeliad
	Dianella tasmanica	Flax Lily		
14	Dietes iridoides	African Iris - White	Neomarica gracilis	Walking Iris
	Dietes bicolor	African Iris - Yellow		
15	Dryopteris erythrosora	Autumn Fern	Cyrtomium falcatum	Holly Fern
	Memerocallis fulva	Daylily		
16	Lantana montevidensis	Trailing Lantana	Ophiopogon japonicus	Mondo Grass
	Lantana depressa	Pineland Lantana		
17	Agapanthus africanus	Lily of the Nile	Aspidistra elatior 'Milky Way'	Milky Way Aspidistra
	Helianthus debilis	Dune Sunflower		

Planting Plans

Side and Front Yard- Corner Lot

Plan 11



Plan Options

Option 1 - BED A- Lowest Cost

Foundation plants

Plant ID Number and total plants
Trees- 1 and 2 (4 trees)
Shrubs- 6 through 10 (47 plants)
Groundcover- 11 (178 sq. ft.)
Remainder of front and side yard in turf

Option 2 - BED A & B - Medium Cost

Foundation plants

Plant ID Number and total plants
Trees- 1 through 4 (8 trees)
Shrubs- 5 through 10 (98 plants)
Groundcover- 11 (378 sq. ft.)
Remainder of front and side yards in turf

Option 3 - BED A, B & C- Highest Cost

Foundation and verge plants

Plant ID Number and total plants
Trees- 1 through 4 (8 trees)
Shrubs- 5 through 10 (98 plants)
Groundcover- 11 and 12 (1,979 sq. ft.)
Turf: 1,400 sq. ft

Site Dimensions

Overall Site: 9,147 sq. ft. (.21 acres)
Front and Side Yard: 2,315 sq. ft.
Front Yard: Depth- 25 ft., Width-75 ft.
Side Yards: Width- 18 ft.
Tree canopy coverage: 2,353
House: 2,600 sq. ft.

Plant Totals

of species: 17
of trees and shrubs: 178
Groundcover: 1,979 sq. ft.
Turf: 1,400 sq. ft.

Plant Schedules

Side and Front Yard- Corner Lot

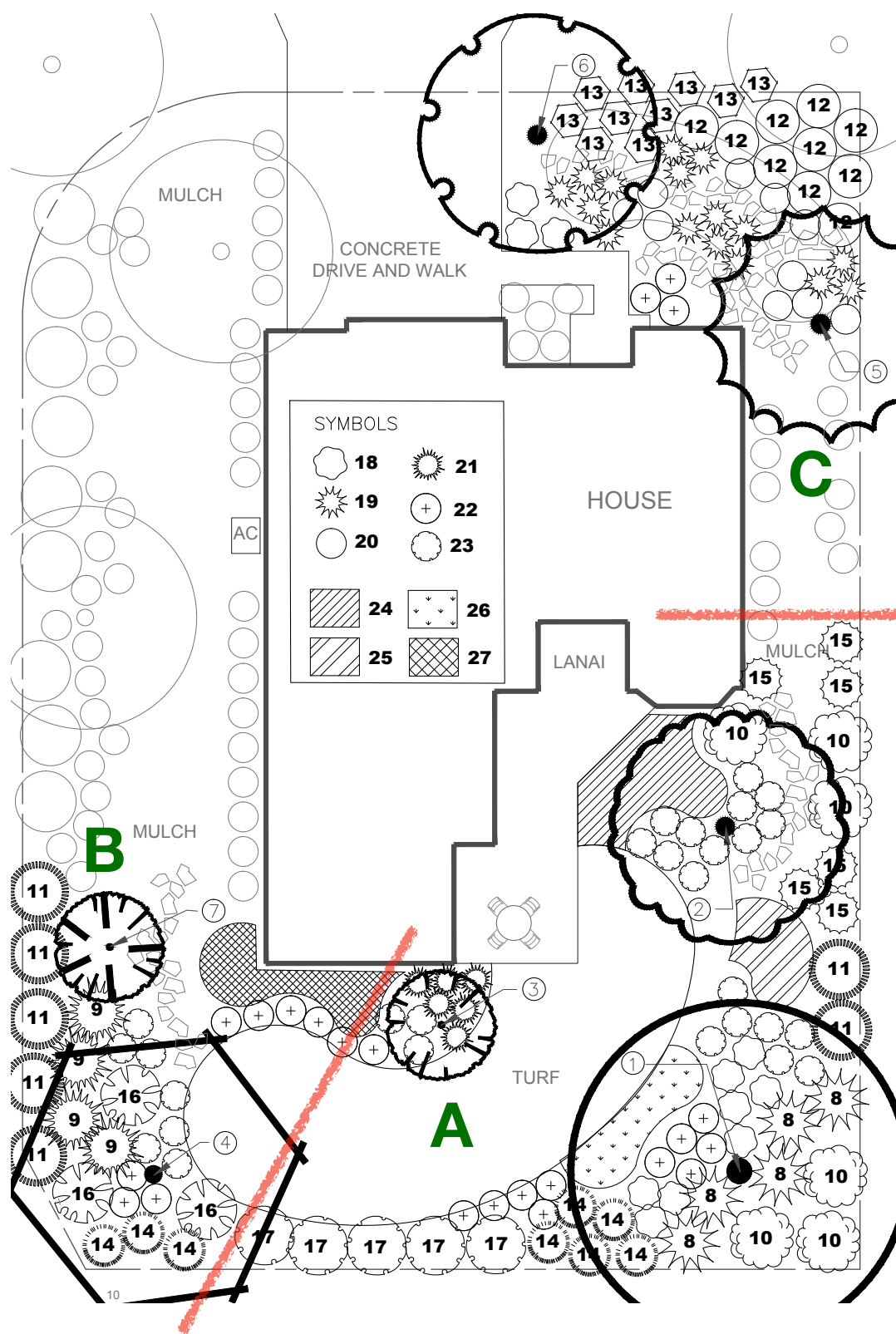
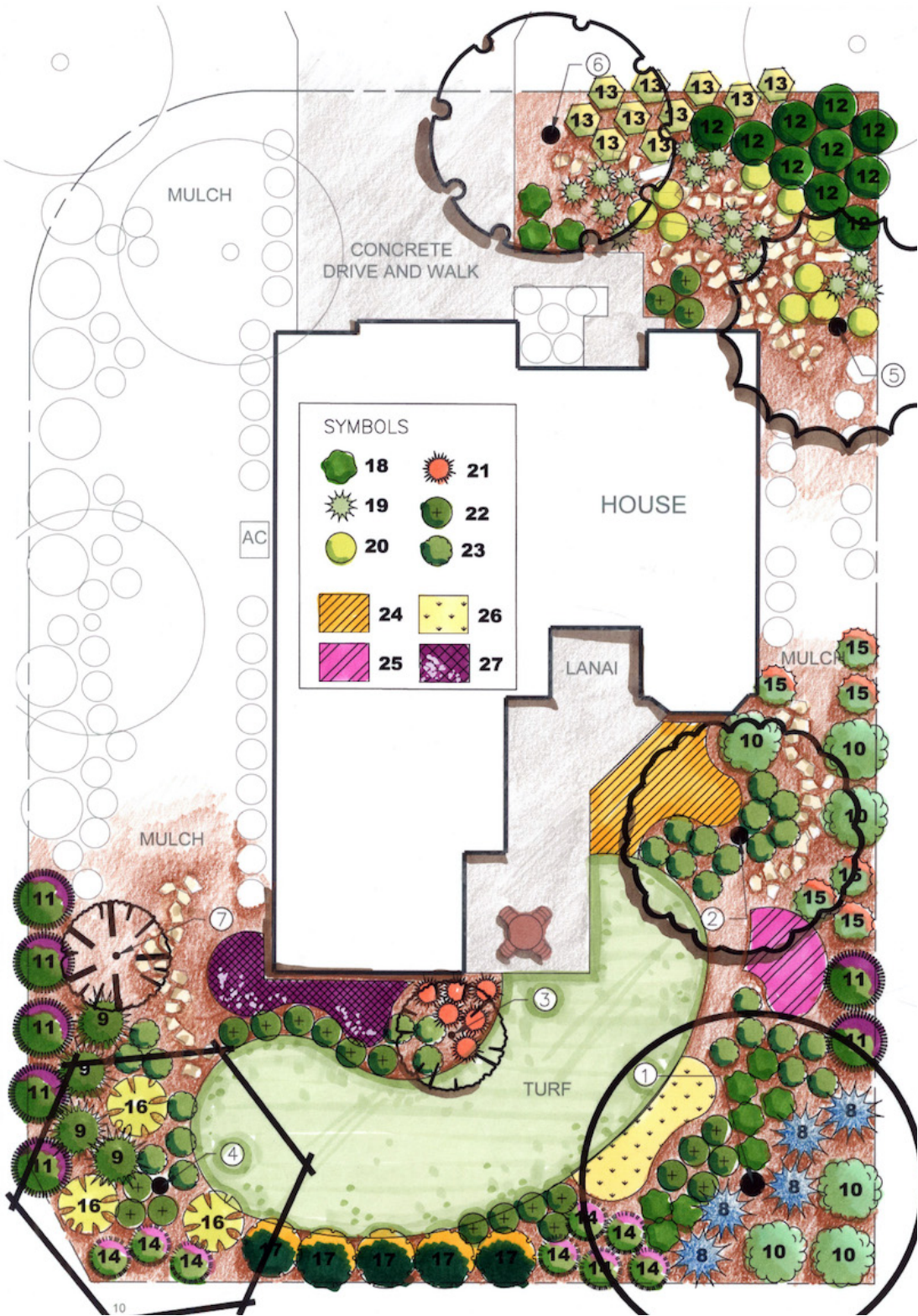
Plan 11

PLANT SCHEDULE FOR PLANTING PLAN #11: SIDE YARD CORNER LOT - ZONE 9A - 9B				
	SUN PLANTS (plus one alternative)		SHADE PLANTS	
NO.	BOTANICAL	COMMON NAME	BOTANICAL	COMMON NAME
	TREES			
1	Lysiloma latisiliquum	Wild Tamarind	Ilex cassine	Dahoon Holly
	Ilex rotunda	Round Holly		
2	Sabal palmetto	Cabbage Palm	Trachycarpus fortunei	Windmill Palm
	Livistona spp.	Chinese Fan Palm		
3	Prunus angustifolia	Chichsaw Plum	Chionanthus virginicus	Fringe Tree
	Lagerstroemia indica	Crepe Myrtle		
4	Quercus virginiana	Live Oak	NA	
	Quercus falcata	Turkey Oak		
	SHRUBS			
5	Serenoa repens	Saw Palmetto	Rhapidophyllum hystrix	Needle Palm
	Philodendron bipinnatifidum	Selloum		
6	Myrica cerifera	Wax Myrtle	Ilex vomitoria	Yaupon Holly
	Ilex vometoria 'Pendula'	Weeping Yaupon Holly		
7	Yucca filamentosa	Adam's Needle	Dryopteris spp.	Autumn Fern
	Agave spp.	Century Plant		
8	Zamia floridana	Coontie	Philodendron bipinnatifidum 'xanadu'	Xanadu Philodendron
	Rosmarinus spp.	Rosemary		
9	Muhlenbergia capillaris	Muhly Grass	Dietes iridioides	African Iris
	Aristida stricta var. beyrichiana	Wiregrass		
10	Cyrtomium falcatum	Holly Fern	Aspidistra elatior	Cast Iron Plant
	Acrostichum danaefolium	Leather fern		
	GRASSES, GROUND COVERS, PERENNIALS			
11	Arachis glabrata	Perennial Peanut	Ardisia japonica	Japanese Ardisia
	Mimosa strigillosa	Sunshine Mimosa		
12	Juniperus conferta	Shore Juniper	Ophiopogon japonicus	Mondo Grass
	Juniperus horizontalis	Creeping Juniper		

PLANT SCHEDULE FOR PLANTING PLAN #11: SIDE YARD CORNER LOT - ZONE 10A - 10B				
	SUN PLANTS (plus one alternative)		SHADE PLANTS	
NO.	BOTANICAL	COMMON NAME	BOTANICAL	COMMON NAME
	TREES			
1	Lysiloma latisiliquum	Wild Tamarind	Ilex cassine	Dahoon Holly
	Tabebuia heterophylla	Pink Trumpet Tree		
2	Sabal palmetto	Cabbage Palm	Trachycarpus fortunei	Windmill Palm
	Thrinax sp.	Thatch Palm		
3	Jatropha integerrima	Peregrina	Myrcianthes fragrans	Simpson's Stopper
	Ligustrum japonicum	Japanese Privet		
4	Bursera simaruba	Gumbo Limbo	NA	
	Ficus citrifolia	Shortleaf Fig		
	SHRUBS			
5	Philodendron bipinnatifidum	Selloum	Rhapidophyllum hystrix	Needle Palm
	Zamia furfuracea	Cardboard Plant		
6	Myrica cerifera	Wax Myrtle	Schefflera arboricola	Dwarf Schefflera
	Ilex vomitoria 'nana'	Dwarf Yaupon Holly		
7	Yucca filamentosa	Adam's Needle	Dryopteris spp.	Autumn Fern
	Agave spp.	Century Plant		
8	Zamia floridana	Coontie	Philodendron bipinnatifidum 'xanadu'	Xanadu Philodendron
	Rosmarinus spp.	Rosemary		
9	Cyrtomium falcatum	Holly Fern	Aspidistra elatior	Cast Iron Plant
	Acrostichum danaefolium	Leather fern		
10	Muhlenbergia capillaris	Muhly Grass	Dietes iridioides	African Iris
	Tripsacum dactyloides	Fakahatchee Grass		
	GRASSES, GROUND COVERS, PERENNIALS			
11	Arachis glabrata	Perennial Peanut	Ardisia japonica	Japanese Ardisia
	Mimosa strigillosa	Sunshine Mimosa		
12	Juniperus conferta	Shore Juniper	Ophiopogon japonicus	Mondo Grass
	Juniperus chinensis 'Parsonii'	Parson's Juniper		

Planting Plans Back Yard Butterfly and Front Yard Rain Garden

Plan 12



Plan Options

Option 1 - BED A- Lowest Cost
Perimeter butterfly garden and patio plants

Plant ID Number and total plants
Trees- 1, 2, 3 (3 trees)
Shrubs- 8, 10, 11, 14, 15, 17-19, 21-23 (74 plants)
Groundcover- 24-26 (318 sq. ft.)
Remainder of front and side yard in turf

Option 2 - BED A & B - Medium Cost
Perimeter butterfly garden, patio and foundation plants

Plant ID Number and total plants
Trees- 1-3, 4, 7 (5 trees)
Shrubs- 8-11, 14-19, 21-23 (105 plants)
Groundcover- 24-27 (440 sq. ft.)
Remainder of front and side yard in turf

Option 3 - BED A, B & C- Highest Cost
Perimeter butterfly garden, patio and foundation plants, and reran garden

Plant ID Number and total plants
Trees- 1 through 7 (7 trees)
Shrubs- 8-23 (156 plants)
Groundcover- 24-27 (440 sq. ft.)
Backyard Turf: 9,875 sq. ft

Site Dimensions
Overall Site: 13,068 sq. ft. (.30 acres)
Back Yard without patio: 4,552 sq. ft.
Back Yard: Depth- 32-60 ft., Width- 90 ft.
Side Yards: Width- 12 ft. and 26 ft.
Tree canopy coverage: 2,256 sq. ft.
House: 2,950 sq. ft.

Plant Totals
of species: 27
of trees and shrubs: 156
Groundcover: 440 sq. ft.
Backyard Turf: 1,050 sq. ft.
Rain Garden: 600 sq. ft.

Plant Schedules

Back Yard Butterfly and Front Yard Rain Garden

Plan 12

PLANT SCHEDULE FOR PLANTING PLAN #12: BUTTERFLY AND RAIN GARDEN - ZONE 9A - 9B				
	SUN PLANTS (plus one alternative)		SHADE PLANTS	
NO.	BOTANICAL	COMMON NAME	BOTANICAL	COMMON NAME
	TREES			
1	Quercus michauxii	Swamp Chestnut Oak	NA	
	Quercus falcata	Turkey Oak		
2	Zanthoxylum clava-herculis	Hercules' Club	Ilex cassine	Dahoon Holly
	Cercis canadensis	Eastern Redbud		
3	Callistemon spp.	Bottlebrush	Chionanthus virginicus	Fringe Tree
	Cephalanthus occidentalis	Buttonbush		
4	Persea borbonia	Red Bay	Carpinus caroliniana	Musclewood
	Ulmus alata	Winged Elm		
5	Persea palustris	Swamp Bay	Ilex cassine	Dahoon Holly
	Ilex opaca	American Holly		
6	Taxodium spp.	Bald Cypress	Fraxinus pennsylvanica	Green Ash
	Fraxinus caroliniana	Water Ash		
7	Asimina spp.	Pawpaw	NA	
	SHRUBS			
8	Sabal minor	Dwarf Palmetto	Rhapidophyllum hystix	Needle Plam
	Sabal etonia	Scrub Palmetto		
9	Lyonia lucida	Fetterbush	Ternstroemia gymnanthera	Cleyera
	Lantana depressa	Weepig Lantana		
10	Clethra alnifolia	Sweet Pepperbush	Acrostichum danaeifolium	Leather Fern
	Vaccinium arboreum	Sparkleberry		
11	Duranta erecta	Golden Dewdrop	Clethra alnifolia	Sweet Pepperbush
	Vitex agnus-castus	Chaste Tree		
12	Blechnum serrulatum	Swamp Fern	Osmunda cinnamomea	Cinnamon Fern
	Osmunda regalis	Royal Fern		
13	Tripsacum dactyloides	Gamma Grass	Dietes iridioides	African Iris
	Muhlenbergia capillaris	Muhly Grass		
14	Itea virginica	Virginia Willow	Rhododendron cvs.	Azalea
	Rhododendron simsii	Formosa Azalea		
15	Lonicera sempervirens	Coral Honeysuckle	Aster carolinianus	Climbing Aster
	Passiflora incarnata	Passion Vine		
16	Yucca spp.	Yucca	Bromeliaceae genera	Bromeliads
	Aloe sp.	Aloe Vera		
17	Buddleia lindleyana	Butterfly Bush	Ilex vomitoria	Yaupon Holly
	Hibiscus spp.	Hibiscus		
18	Gamolepis spp.	Bush Daisy	Mahonia fortunei	Holly Grape
	Rosmarinus spp.	Rosemary		
19	Spartina spp.	Cordgrass	Agapanthus praecox ssp. orientalis	Agapanthus
	Muhlenbergia capillaris	Muhly Grass		
20	Canna spp.	Cana Lily	Echinacea purpurea	Purple Coneflower
	Asclepias spp.	Milkweed		
21	Justicia brandegeana	Shrimp Plant	Leonotis leonurus	Lion's Ear
	Monarda punctata	Spotted Beebalm		
22	Dyschoriste oblongifolia	Twin Flower	Evolvulus glomeratus	Blue Daze
	Lantana montevidensis	Trailing Lantana		
23	Zamia floridana	Coontie	Cyrtomium falcatum	Holly Fern
	Acrostichum danaeifolium	Leather Fern		
	GRASSES, GROUND COVERS, PERENNIALS			
24	Coreopsis spp.	Coreopsis	Echinacea purpurea	Purple Coneflower
	Gaillardia pulchella	Blanket Flower		
25	Phyla nodiflora	Capeweed	Vinca major	Periwinkle
	Mimosa strigillosa	Powderpuff		
26	Rudbeckia hirta	Black-Eyed Susan	Neomarica gracilis	Walking Iris
	Solidago oduro	Goldenrod		
27	Pentas lanceolata	Pentas	Impatiens spp.	Impatiens
	Liatris spp.	Blazing Star		

PLANT SCHEDULE FOR PLANTING PLAN #12: BUTTERFLY AND RAIN GARDEN - ZONE 10A - 10B				
	SUN PLANTS (plus one alternative)		SHADE PLANTS	
NO.	BOTANICAL	COMMON NAME	BOTANICAL	COMMON NAME
	TREES			
1	Quercus michauxii	Swamp Chestnut Oak	NA	
	Quercus falcata	Turkey Oak		
2	Baccharis halimifolia	Salt Bush	Ilex cassine	Dahoon Holly
	Ardisia escallonioides	Marlberry		
3	Callistemon spp.	Bottlebrush	Aesculus pavia	Red Buckeye
	Cephalanthus occidentalis	Buttonbush		
4	Cyrilla racemiflora	Leatherwood	Cornus foemina	Swamp Dogwood
5	Ilex vomitoria	Yaupon Holly	Myrcianthes fragrans	Simson's stopper
	Ilex opaca	American Holly		
6	Taxodium spp.	Bald Cypress	Pinus clausa	Snad Pine
	Myrica cerifera	Wax Myrtle		
7	Asimina spp.	Pawpaw	Chionanthus virginicus	Fringetree
	Citharexylum spinosum	Fiddlewood		
	SHRUBS			
8	Sabal minor	Dwarf Palmetto	Rhapidophyllum hystix	Needle Plam
	Sabal etonia	Scrub Palmetto		
9	Lantana depressa	Weepig Lantana	Acrostichum danaeifolium	Leather Fern
	Brunfelsia americana	Lady of the Night		
10	Thunbergia erecta	King's Mantle	Ternstroemia gymnanthera	Cleyera
	Senna bicapsularis	Christmas Senna		
11	Duranta erecta	Golden Dewdrop	Clethra alnifolia	Sweet Pepper Bush
	Vitex agnus-castus	Chaste Tree		
12	Blechnum serrulatum	Swamp Fern	Osmunda cinnamomea	Cinnamon Fern
	Osmunda regalis	Royal Fern		
13	Tripsacum dactyloides	Gamma Grass	Dietes iridioides	African Iris
	Muhlenbergia capillaris	Muhly Grass		
14	Itea virginica	Virginia Sweet Spire	Rhododendron cvs.	Azalea
	Rhododendron simsii	Formosa Azalea		
15	Lonicera sempervirens	Coral Honeysuckle	Aster carolinianus	Climbing Aster
	Passiflora incarnata	Passion Vine		
16	Yucca spp.	Yucca	Hymenocallis spp.	Spider Lily
	Aloe sp.	Aloe Vera		
17	Cestrum aurantiacum	Orange Jessamine	Ilex vomitoria	Yaupon Holly
	Hibiscus spp.	Hibiscus		
18	Gamolepis spp.	Bush Daisy	Cuphea hyssopifolia	Mexican Heather
	Rosmarinus spp.	Rosemary		
19	Spartina spp.	Cordgrass	Agapanthus praecox ssp. orientalis	Agapanthus
	Muhlenbergia capillaris	Muhly Grass		
20	Canna spp.	Cana Lily	Echinacea purpurea	Purple Coneflower
	Asclepias spp.	Milkweed		
21	Justicia brandegeana	Shrimp Plant	Leonotis leonurus	Lion's Ear
	Flaveria linearis	Yellow top		
22	Dyschoriste oblongifolia	Twin Flower	Evolvulus glomeratus	Blue Daze
	Lantana montevidensis	Trailing Lantana		
23	Zamia floridana	Coontie	Cyrtomium falcatum	Holly Fern
	Acrostichum danaeifolium	Leather Fern		
	GRASSES, GROUND COVERS, PERENNIALS			
24	Hemerocallis spp.	Daylily	Echinacea purpurea	Purple Coneflower
	Gaillardia pulchella	Blanket Flower		
25	Phyla nodiflora	Capeweed	Vinca major	Periwinkle
	Mimosa strigillosa	Powderpuff		
26	Liatris spp.	Blazing Star	Neomarica gracilis	Walking Iris
	Solidago oduro	Goldenrod		
27	Pentas lanceolata	Pentas	Impatiens spp.	Impatiens
	Liatris spp.	Blazing Star		

Planting Plans

Plants Around Utilities and Screened Pools

Plan 13

Plan Options

Option 1 - BED A- Lowest Cost
Foundation plants and plants around utility transformer

Plant ID Number and total plants
Trees- 3 (3 trees)
Shrubs- 5, 9, 10, 11 and 13 (28 shrubs)
Groundcover- 15, 16 (205 sq. ft.)
Remainder of lot in Turf

Option 2 - BED A & B- Medium Cost
Foundation and pool enclosure plus overhead line

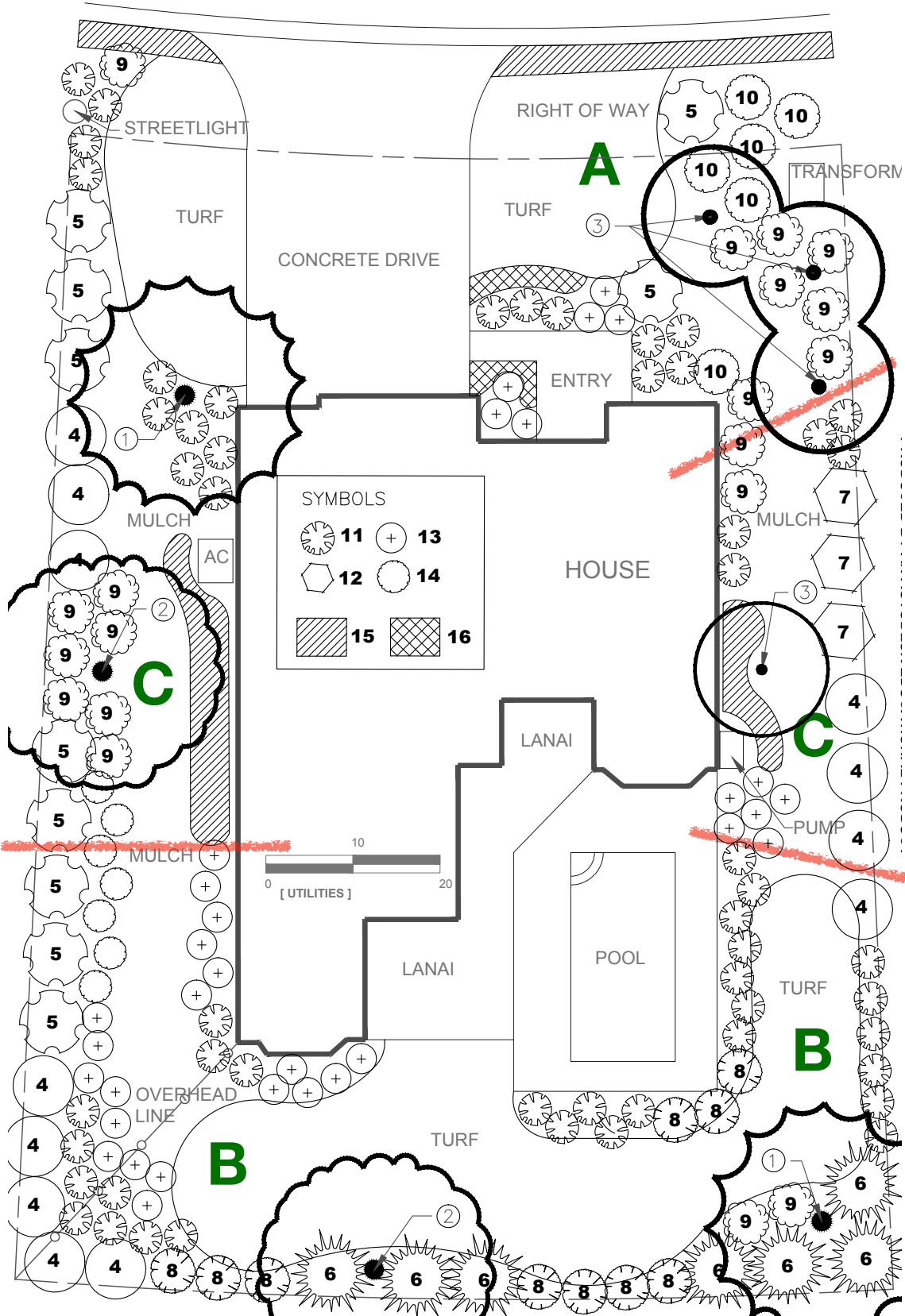
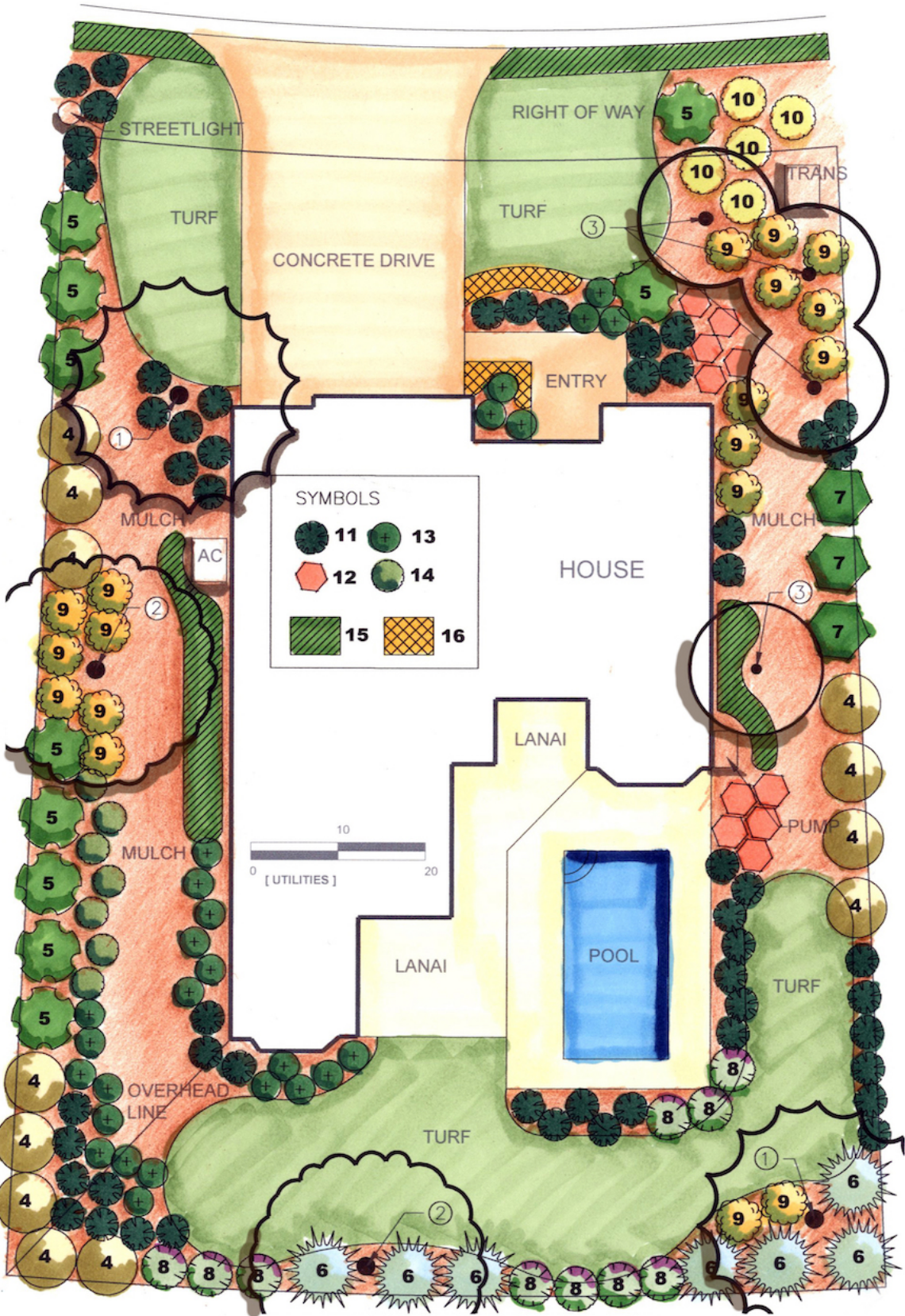
Plant ID Number and total plants
Trees- 1, 2, 3 (5 trees)
Shrubs- 4-6, 8, 9-11,13,14 (111 plants)
Groundcover- 15 and 16 (205 sq. ft.)
Remainder of lot in turf

Option 3- BED A, B & C- Highest Cost
All plant beds

Plant ID Number and total plants
Trees- 1, 2 and 3 (8 trees)
Shrubs- 4 through 11, 13, 14 (159 plants)
Groundcover- 15 and 16 (582 sq. ft.)
Front and Back Yard Turf- 2,825 sq. ft.

Site Dimensions
Overall Site: 13,503 sq. ft. (.31 acres)
Front and back yard without pool and drive: 8,281 sq. ft.
Front Yard: Depth-45 ft., Width- 95 ft.
Back Yard: Depth- 32 ft., Width- 110 ft.
Side Yards: 16 and 20 ft
Tree canopy coverage: 3,096 sq. ft.
Pool Deck: 1,270 sq. ft.
House size: 2,860 sq. ft.

Plant Totals
No of Species: 16
No. of trees and shrubs: 166
Groundcover: 582 sq. ft.



Plant Schedules

Plants Around Utilities and Screened Pools

Plan 13

PLANT SCHEDULE FOR PLANTING PLAN #13: PLANTS FOR UTILITIES/SCREENED POOLS ZONE 9A - 9B				
	SUN PLANTS (plus one alternative)		SHADE PLANTS	
NO.	BOTANICAL	COMMON NAME	BOTANICAL	COMMON NAME
	TREES			
1	Ilex vomitoria	Yaupon Holly	Ilex cassine	Dahoon Holly
	Ilex rotunda			
2	Juniperus virginiana	Eastern Red Cedar	Camelia sasanqua	Sasanqua camelia
	Myrica cerifera			
3	Sabal palmetto	Cabbage Palm	Livistona chinesis	Chinese Fan Palm
	Trachycarpus fortuneii			
	SHRUBS			
4	Myrcianthes fragrans	Simpson's Stopper	Hamelia patens	Firebush
	Vaccinium arboreum	Sparkleberry		
5	Philodendron bipinnatifidum	Selloum	Strelitzia nicolai	White Bird of Paradise
	Musa spp.	Banana		
6	Sabal minor	Dwarf Palmetto	Mahonia bealei	Oregon Holly Grape
	Yucca spp.	Yucca		
7	Forestiera segragata	Florida Privet	Clethra Alnifolia	Sweet Pepper Bush
	Tibouchina urvilleana	Princess Flower		
8	Leucophyllum frutescens	Texas Sage	Itea virginica	Virginia Sweet Spire
	Thunbergia erecta	Bush Clock Vine		
9	Hedychium spp.	Butterfly Ginger	Hydrangea quercifolia	Oakleaf Hydrangea
	Mavaviscous arboreus	Turk's Cap		
10	Canna spp.	Canna Lily	Fatsia japonica	Paperplant
	Alpinia spp.	Shell Flower		
11	Pteridium aquilinum	Bracken Fern	Cephalotaxus harringtonia	Japanese Plum Yew
	Lantana depressa	Pineland Lantana		
12	Justicea brandegeana	Shrimp Plant	Mahonia bealei	Oregon Holly Grape
	Gamolepis spp.	Bush Daisy		
13	Dietes iridioides	African Iris	Neomarica gracilis	Walking Iris
	Belam candachinensis	Blackberry Lily		
14	Conradina canescens	Beach Rosemary	Rumohra adlantiformis	Leatherleaf Fern
	Angelonia angustifolia	Angelonia		
	GRASSES, GROUND COVERS, PERENNIALS			
15	Dianella spp.	Flax Lily	Liriope muscari	Liriope
	Crinum spp.	Crinum Lily		
16	Bulbine frutescens	Bulbine	Ophiopogon japonicus	Mondo Grass
	Tulbaghia violacea	Society Garlic		

PLANT SCHEDULE FOR PLANTING PLAN #13: PLANTS FOR UTILITIES/SCREENED POOLS ZONE 10A - 10B				
	SUN PLANTS (plus one alternative)		SHADE PLANTS	
NO.	BOTANICAL	COMMON NAME	BOTANICAL	COMMON NAME
	TREES			
1	Ilex xattenuata 'East Palatka'	East Palatka Holly	Ilex cassine	Dahoon Holly
	Ilex cassine	Dahoon Holly		
2	Callistemon sp.	Bottle Brush	Jatropha integerima	Jatropha
	Myrcianthes fragrans	Simpson's Stopper		
3	Sabal palmetto	Cabbage Palm	Livistona chinesis	Chinese Fan Palm
	Trachycarpus fortunei	Windmill Palm		
	SHRUBS			
4	Galphimia gracilis	Thryallis	Allamanda neriifolia	Bush Allamanda
	Barleria micans	Yellow Shrimp Plant		
5	Ixora coccinea	Ixora	Acalypha wilkesiana	Copperleaf
	Malvaviscous arboreus	Turk's Cap		
6	Sabal minor	Dwarf Palmetto	Philodendron cvs	Philodendron
	Duranta erecta	Golden Dewdrop		
7	Lyonia ferruginea	Rusty Lyonia	Psychotria nervosa	Wild Coffee
	Itea virginica	Virginia Sweet Spire		
8	Rosmarinus terminalis	Rosemary	Torenia fournieri	Wishbone Flower
	Angelonia angustifolia	Angelonia		
9	Pteridium aquilinum	Bracken Fern	Caladium xhortulanum	Caladium
	Russelia sarmentosa	Firecracker		
10	Paspalum quadrifarium	Crown Grass	Zingiber zerumbet	Pine Cone Ginger
	Zamia floridana	Coontie		
11	Agapanthus praecox ssp. orientalis	Agapanthus	Cyrtomium falcatum	Holly Fern
	Belamcanda chinensis	Blackberry Lily		
12	Justicea brandegeana	Shrimp Plant	Costus spp.	Spiral Ginger
	Cordyline spp.	Ti Plant		
13	Aloe spp.	Aloe	Bromeliaceae Genera	Bromeliads
	Agave spp.	Agave		
14	Acrostichum danaeifolium	Leather Fern	Dryopteris spp.	Autumn Fern
	Heliotropium angiospermum	Scorpion Tail		
	GRASSES, GROUND COVERS, PERENNIALS			
15	Dianella spp.	Flax Lily	Liriope muscari	Liriope
	Dietes Iridiodes	African Iris		
16	Anthericum sanderi	St. Bernard's Lily	Ophiopogon japonicus	Mondo Grass
	Bulbine frutescens	Bulbine		